

GENERAL NOTES

ALL CONSTRUCTION SHALL BE IN ACCORDANCE WITH THE REQUIREMENTS SET FORTH BY 2003 IBC AND SHALL CONFORM TO ALL OTHER APPLICABLE MUNICIPAL, STATE, AND FEDERAL REGULATIONS INCLUDING THE ILLINOIS ACCESSIBILITY CODE (1997) AND THE AMERICANS WITH DISABILITIES ACT.

A. GENERAL NOTES

- 1. ALL CONTRACTORS ARE REQUIRED TO VISIT THE SITE AND BE KNOWLEDGEABLE REGARDING EXISTING CONDITIONS AND THEIR EFFECT ON THE PROPOSED WORK. CONTRACTORS SHALL VERIFY AND BE RESPONSIBLE FOR ANY CONDITIONS REQUIRING MODIFICATION BEFORE PROCEEDING WITH THE PROJECT.
2. NOTIFY THE OWNER'S REPRESENTATIVE A MINIMUM OF 72 HOURS PRIOR TO THE INTERRUPTION OF ANY UTILITY.
3. CONTRACTORS AND SUBCONTRACTORS SHALL COORDINATE THEIR WORK WITH THAT OF OTHER TRADES.
4. NO WORK WILL BE PERMITTED TO BE INSTALLED WITHOUT RECEIPT AND SUBSEQUENT REVIEW OF FULL AND COMPLETE SUBMITTALS BY THE ARCHITECT/ENGINEER.
5. DO NOT SCALE DRAWINGS, DIMENSIONS INDICATED TAKE PRECEDENCE OVER SCALE.
6. VERIFY ALL DIMENSIONS AND ELEVATIONS IN THE FIELD. WHERE DISCREPANCIES ARE FOUND BETWEEN DIMENSIONS OR ELEVATIONS SHOWN AND ACTUAL FIELD CONDITIONS, NOTIFY ARCHITECT/ENGINEER.
7. DEFINITIONS:
7.1. FURNISH: SUPPLY, DELIVER TO AND UNLOAD AT PROJECT SITE READY FOR ASSEMBLY AND INCORPORATION INTO THE WORK.
7.2. INSTALL: AT THE PROJECT SITE, UNPACK/INCORPATE ASSEMBLY, PLACE, ANCHOR, FINISH, PROTECT, CLEAN, AND PERFORM ALL OTHER SIMILAR OPERATIONS REQUIRED TO FULLY AND PROPERLY INCORPORATE AN ITEM INTO THE WORK. LEGALLY DISPOSE OF OR RECYCLE PACKAGING AND EXTRA MATERIAL OFF-SITE.
7.3. PROJECT SITE: THE SPACE AVAILABLE TO THE CONTRACTOR FOR PERFORMANCE OF CONSTRUCTION ACTIVITIES. THE EXTENT OF THE PROJECT SITE IS THE AREAS TO BE REMODELED AS INDICATED ON THE DRAWINGS, AND EXTENDS TO SUCH AREAS AS CONTAIN TERMINATIONS FOR POWER, DATA AND OTHER SERVICES.
7.4. OFF-SITE: OUTSIDE THE PROPERTY IN WHICH THE PROJECT SITE IS LOCATED.
7.5. PROVIDE: FURNISH AND INSTALL, AS DEFINED ABOVE.
8. WHERE CONFLICTS MAY EXIST BETWEEN THE REQUIREMENTS OF PORTIONS OF THE CONTRACT DOCUMENTS, THE GREATER QUANTITY, HIGHER QUALITY OR MORE STRINGENT REQUIREMENT SHALL GOVERN. THEREFORE, BY EXECUTING A CONTRACT FOR CONSTRUCTION, THE CONTRACTOR AGREES THAT, IF IT RAISED NO QUESTIONS REGARDING SUCH CONFLICTS DURING THE BIDDING PROCESS, AND IN THE ABSENCE OF A CLARIFYING ADDENDUM ISSUED DURING THE BIDDING PROCESS, IT HAS VOLUNTEERED TO COMPLY WITH THE MORE EXPENSIVE REQUIREMENT AS PART OF ITS BASE BID AND IS NOT ENTITLED TO ANY ADDITIONAL COMPENSATION TO RESOLVE THE CONFLICT.
9. THE CONTRACT DOCUMENTS REQUIRE THE CONTRACTOR TO FURNISH AND INSTALL COMPLETE PRODUCTS, SYSTEMS AND SERVICES. BY EXECUTING A CONTRACT FOR CONSTRUCTION, THE CONTRACTOR AGREES THAT THE DRAWINGS SET FORTH THE DESIGN INTENT AND, THEREFORE, MAY NOT EXPRESSLY DEPICT EVERY LENGTH, SEGMENT, PIECE, PART, COMPONENT OR UNIT OF A PRODUCT, SYSTEM OR SERVICE. THE CONTRACTOR FURTHER AGREES THAT, AS PART OF ITS BID, IT MUST FURNISH AND INSTALL EVERY LENGTH, SEGMENT, PIECE, PART, COMPONENT OR UNIT OF A PRODUCT, SYSTEM OR SERVICE AND, CONSEQUENTLY, THE CONTRACTOR IS NOT ENTITLED TO ANY ADDITIONAL COMPENSATION FOR ANY LENGTH, SEGMENT, PIECE, PART COMPONENT OR UNIT OF A PRODUCT, SYSTEM OR SERVICE BECAUSE IT IS NOT EXPRESSLY DEPICTED HEREIN.
10. ARCHITECT SHALL BE NAMED AS ADDITIONAL INSURED ON ALL REQUIRED INSURANCE POLICIES.

B. MISCELLANEOUS AND DEMOLITION NOTES

- 1. DEFINITIONS:
1.1. DEMOLISH: DISCONNECT FROM SERVICES, UNFASTEN, REMOVE, DISASSEMBLE AND LEGALLY DISPOSE OF OR RECYCLE OFF-SITE.
1.2. SALVAGE: CAREFULLY, SO AS TO PRESERVE INTEGRITY AND USEFULNESS, DISCONNECT FROM SERVICES, UNFASTEN, REMOVE, DISASSEMBLE IF NECESSARY, AND STORE TEMPORARILY FOR REINCORPORATION INTO THE WORK OR FOR DELIVERY/TURN-OVER TO THE OWNER AS INDICATED IN THE CONSTRUCTION DOCUMENTS.
1.3. SALVAGE IN PLACE: PROTECT, RE-USE, CLEAN, RE-CONDITION IF NECESSARY, REFINISH IF INDICATED IN THE DRAWINGS, EXISTING INSTALLED ITEM/COMPONENT WITHOUT DISCONNECTING, UNFASTENING OR REMOVING FROM THE WORK.
2. BRING ANY UNFORSEEN OR CONFLICTING CONDITIONS TO THE IMMEDIATE ATTENTION OF THE ARCHITECT/ENGINEER BEFORE PROCEEDING WITH THE WORK.
3. REPAIR, PATCH, OR REPLACE FINISH MATERIALS OR VISIBLE ASSEMBLIES THAT ARE SOILED, CUT OR DAMAGED IN ANY FASHION DURING THE COURSE OF THE WORK. PERFORM PATCHING SUCH THAT EDGES BLEND INTO CONTIGUOUS SURFACES SMOOTHLY, MATCHING TEXTURE AND COLOR OF ADJACENT SURFACES.
4. SEAL PENETRATIONS OF DUCTWORK, CONDUIT OR PIPES WITH UL APPROVED MATERIALS TO MAINTAIN THE FIRE RATING OF ASSEMBLIES.
5. APPLY APPROPRIATE & COMPATIBLE SEALANT MATERIALS AS REQUIRED TO SEPARATE DISSIMILAR METALS. FILL GAPS IN EXISTING ASSEMBLIES OR WHERE NEW AND EXISTING ASSEMBLIES MEET OR WHERE OTHERWISE REQUIRED BY THE SPECIFICATIONS.
6. UNTIL PERMANENT LIGHTING IS IN PLACE AND ENERGIZED, PROVIDE AND MAINTAIN TEMPORARY LIGHTING IN THE PROJECT AREAS, TO ACHIEVE A MINIMUM LIGHTING LEVEL OF 2 WATTS PER S.F.
7. OWNER WILL CONTINUE TO OCCUPY AREAS ADJACENT TO THE PROJECT AREAS DURING THE CONSTRUCTION PERIOD. COORDINATE WITH OWNER TO MINIMIZE CONFLICT AND TO FACILITATE OWNER'S OPERATIONS. LIMIT CONDUCT OF ESPECIALLY NOISY OR DISRUPTIVE WORK TO ONLY THOSE TIMES MUTUALLY AGREED TO BY OWNER. REQUEST MUTUALLY AGREEABLE TIME FROM OWNER PRIOR TO CONDUCTING SUCH WORK, AND PROCEED WITH SUCH WORK ONLY AFTER RECEIVING OWNER'S EXPRESS PERMISSION TO DO SO.

C. BIDDING NOTES

- 1. GENERAL CONTRACTOR TO PROVIDE A \$10,000 ALLOWANCE IN HIS/HER BID FOR UNFORSEEN MISCELLANEOUS CONDITIONS. WHEN FIGURING THIS ALLOWANCE IN THE BID, CONTRACTOR IS TO INCLUDE ALL NECESSARY OVERHEAD AND PROFIT. THIS ALLOWANCE IS NOT FOR THE CONTRACTOR'S BENEFIT, AND IS ONLY AUTHORIZED TO CHARGE AGAINST THIS ALLOWANCE WHEN DIRECTED AND APPROVED BY JOLIET JUNIOR COLLEGE. THE CONTRACTOR WILL BE ALLOWED TO INVOICE FOR MATERIAL AND RAW LABOR COST ONLY.
2. CONSTRUCTION SCHEDULE:
START: MAY 18, 2016
SUBSTANTIAL COMPLETION: AUGUST 1, 2016
3. ALL WORK IS TO BE PERFORMED BETWEEN THE HOURS OF 10:00 PM AND 6:00 AM.

STANDARD ABBREVIATIONS

Table with 4 columns of abbreviations and their corresponding full names. Includes terms like AT (ANCHOR BOLT), EXP (EXPANSION), PL (PLATE), and many others.

DRAFTING MATERIALS LEGEND table with 2 columns: Symbol and Description. Includes symbols for INSULATION RIGID, BLOCKING DISCONTINUOUS, and BLOCKING CONTINUOUS.

DRAFTING MATERIALS LEGEND



PROJECT JOLIET JUNIOR COLLEGE - BUILDING E, ROOM 2007 PHYSICS LAB REMODEL
JJC PROJECT NO. JJC-16-686
OWNER JOLIET JUNIOR COLLEGE 1215 HOUBOLT ROAD JOLIET, IL 60431
ARCHITECT/ENGINEER KLUBER, INC. 10 S. SHUMWAY AVE. BATAVIA, ILLINOIS 60510
TEL 630-406-1213 FAX 630-406-9472 www.kluberinc.com

SEALS & CERTIFICATES

Three rectangular boxes for ARCHITECT'S SEAL, MECHANICAL ENGINEER'S SEAL, and ELECTRICAL ENGINEER'S SEAL. Below them is a paragraph of text: 'I HAVE PREPARED, OR CAUSED TO BE PREPARED UNDER MY DIRECT SUPERVISION...' and a signature block for KLUBER, INC. ILLINOIS PROFESSIONAL DESIGN FIRM LICENSE #184-001284.

INDEX OF DRAWINGS

- G100 COVER SHEET, GENERAL NOTES, SYMBOLS, & DRAWING INDEX
A320 SECOND FLOOR DEMOLITION & NEW WORK PLANS
A321 INTERIOR ELEVATIONS, FIRST FLOOR PLANS
MP320 PLUMBING AND MECHANICAL FLOOR PLANS
P321 FIRST FLOOR PLUMBING PLANS AND DETAILS
E320 ELECTRICAL POWER AND LIGHTING PLANS

KLUBER Architects + Engineers

Klubler, Inc.
Batavia, Illinois 60510
Tel. 630.406.1213
Gurnee, Illinois 60031
Tel. 847.236.3626
www.kluberinc.com

BUILDING E, ROOM E2007, PHYSICS LAB REMODELING
JOLIET JUNIOR COLLEGE
1215 HOUBOLT ROAD
JOLIET, IL 60431

Table with 2 columns: ISSUE NO. and DATE. Contains a grid for tracking document revisions.

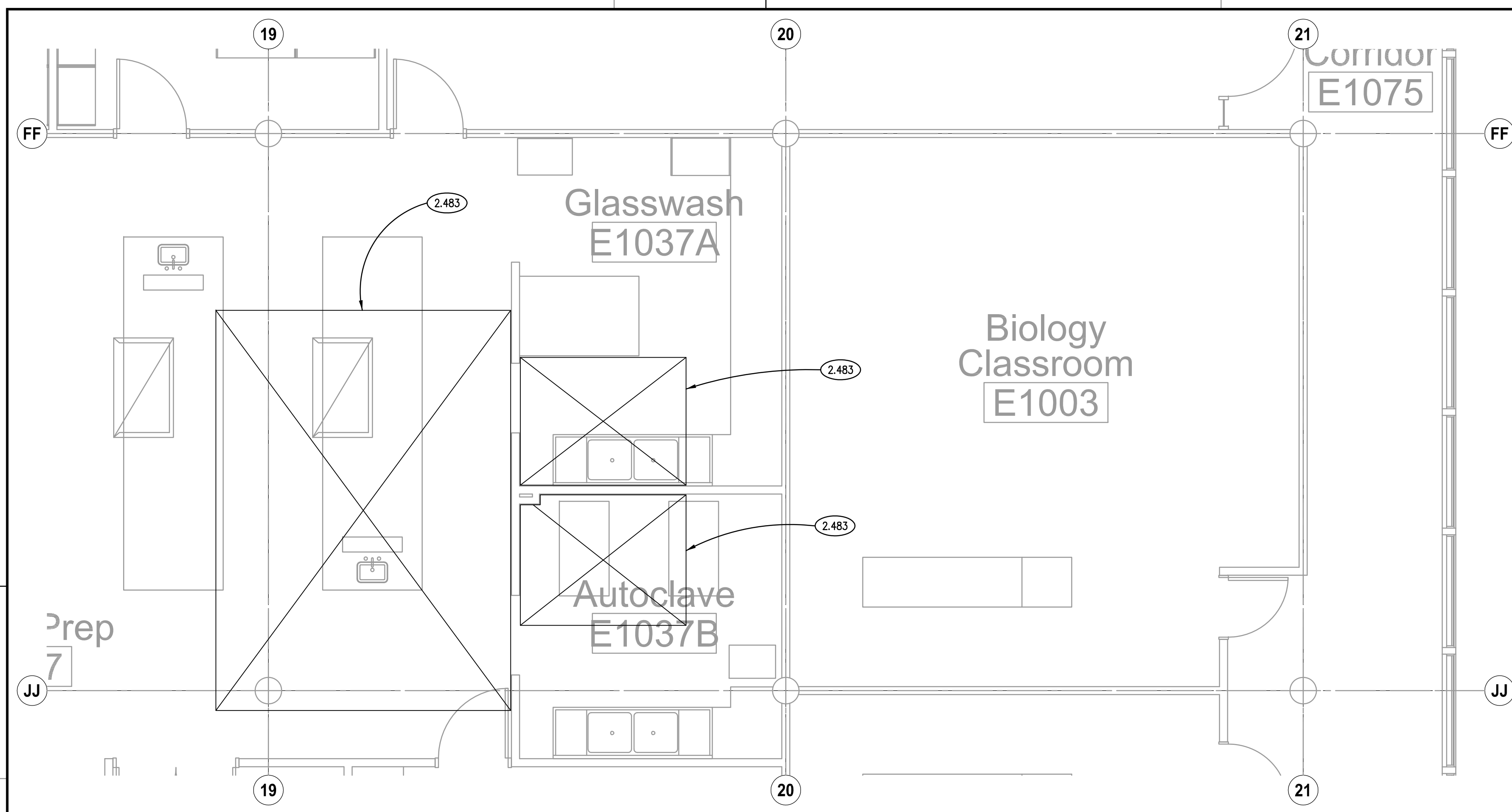
JOB NO. 15-292-1007
DRAWN JMB
CHECKED JMB
APPROVED CDH

SHEET TITLE COVER SHEET

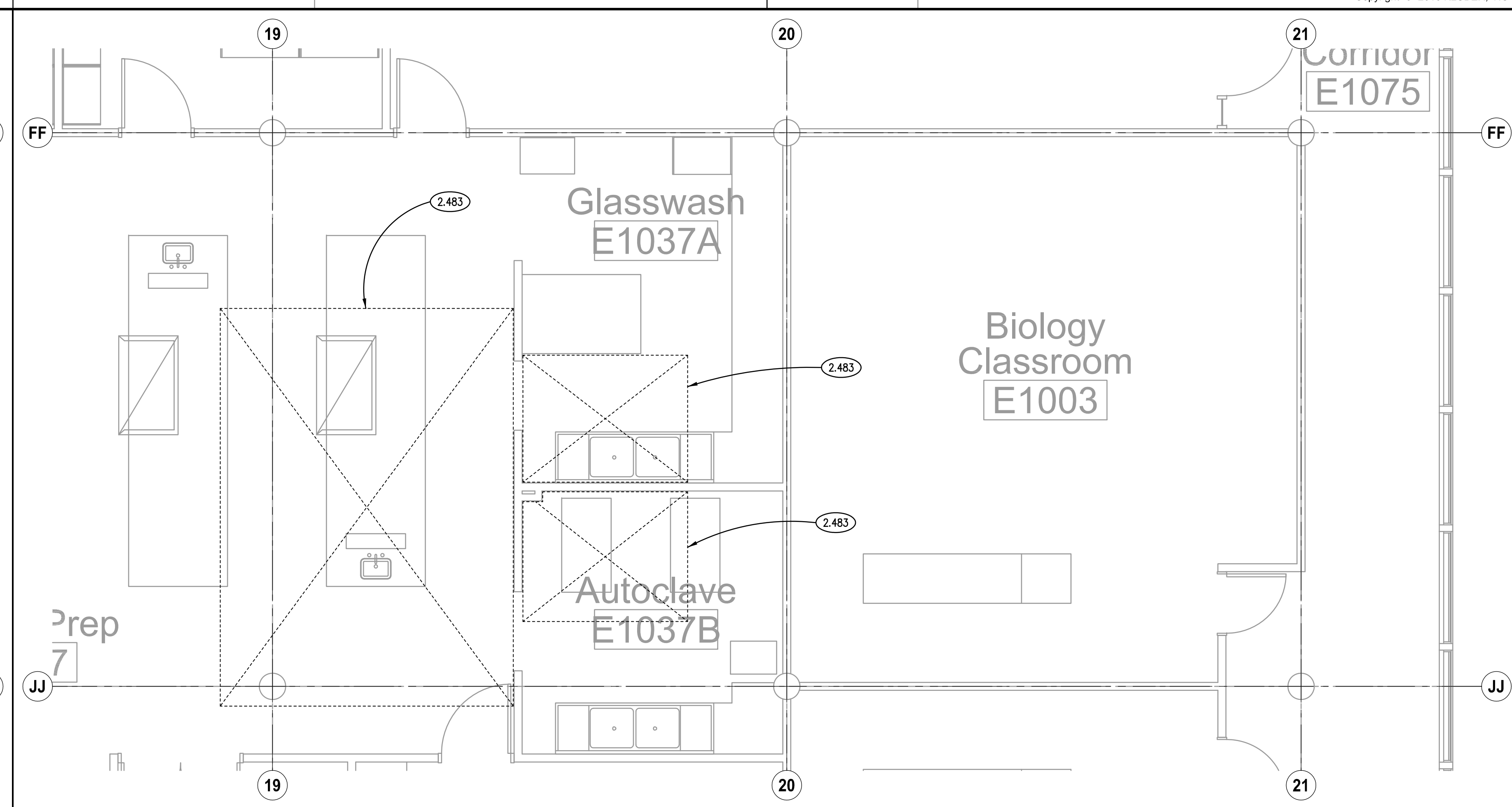
SHEET NUMBER

G100

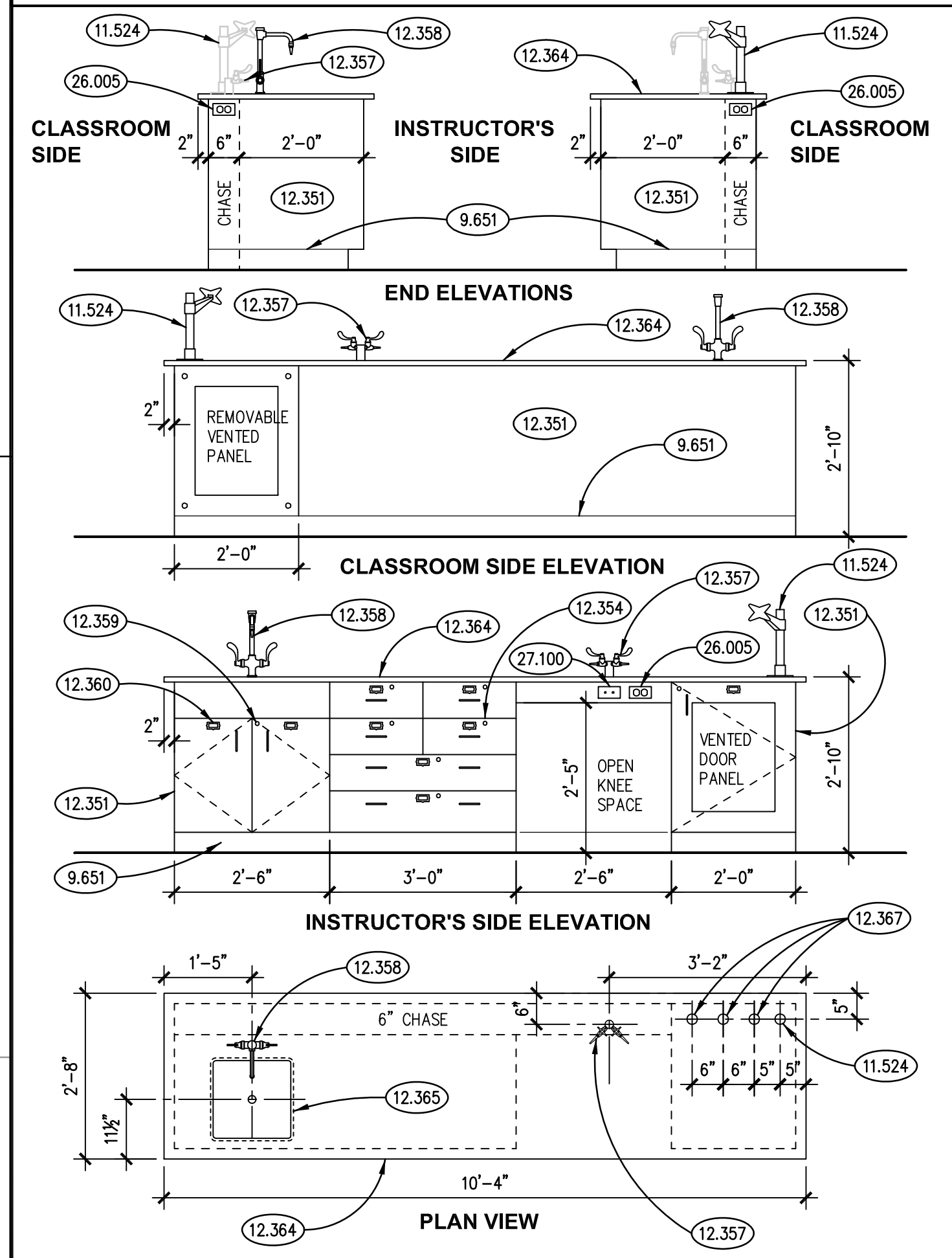




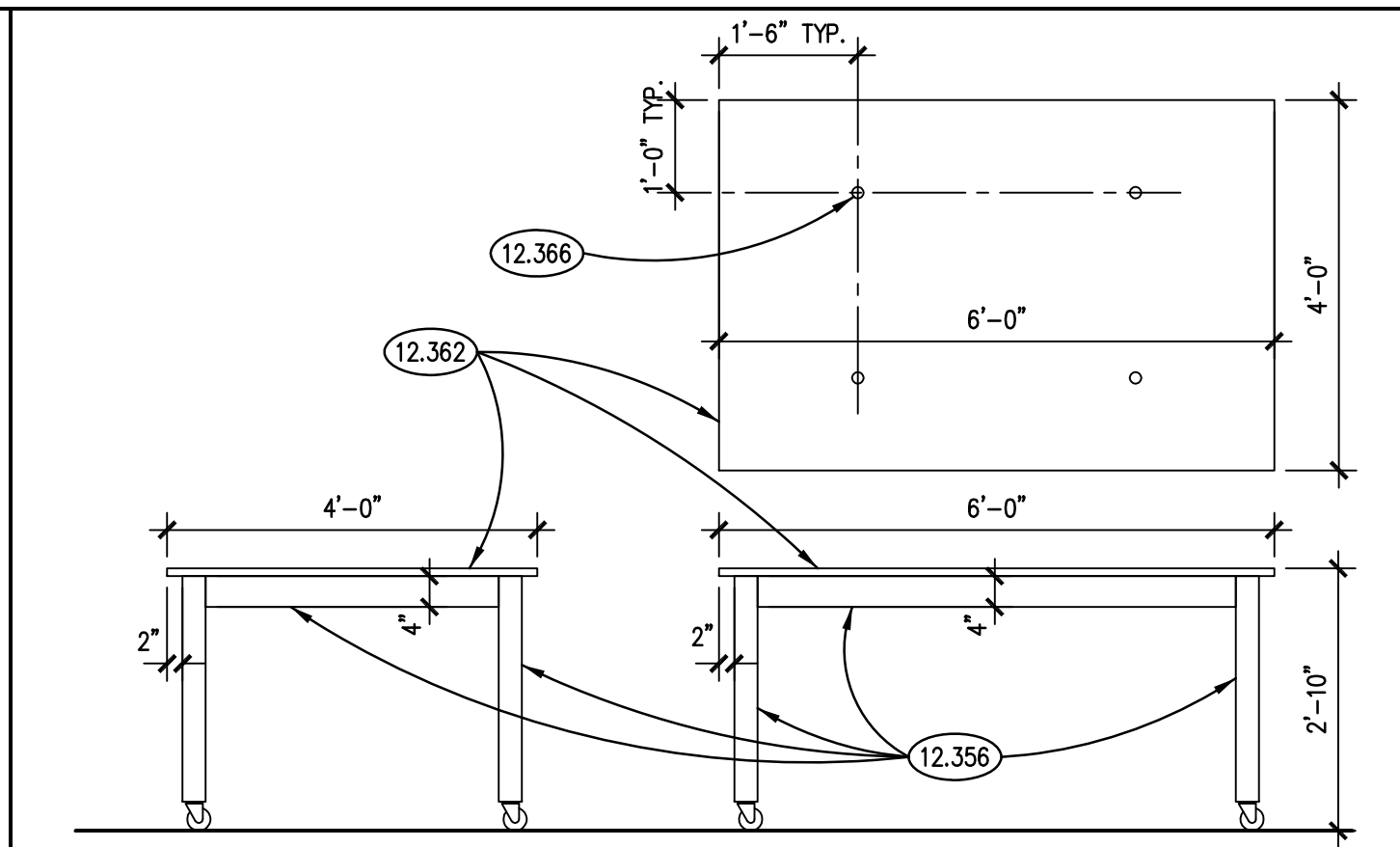
FIRST FLOOR NEW WORK REFLECTED CEILING PLAN 6 SCALE: 1/4" = 1'-0"



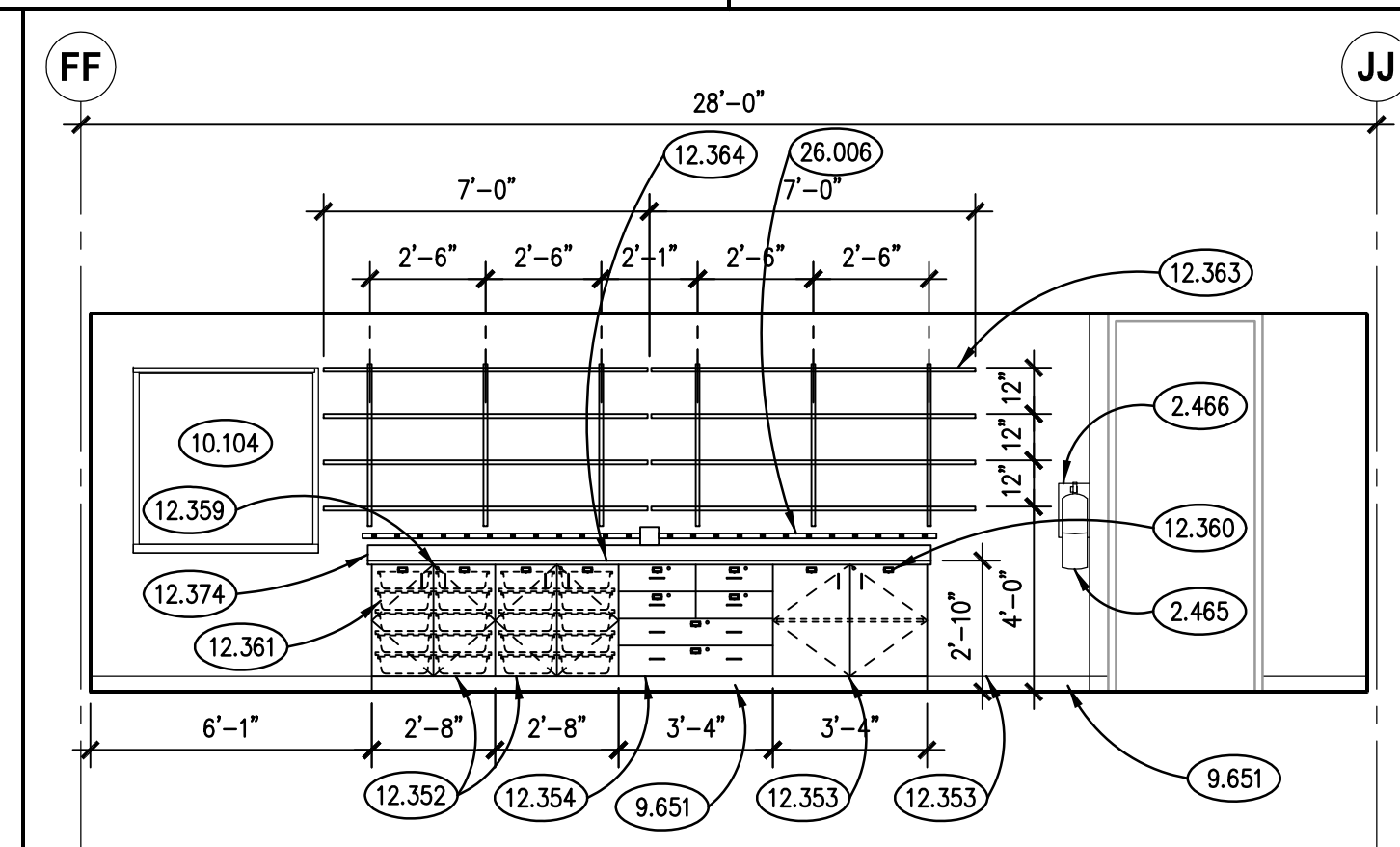
FIRST FLOOR DEMOLITION REFLECTED CEILING PLAN 3 SCALE: 1/4" = 1'-0"



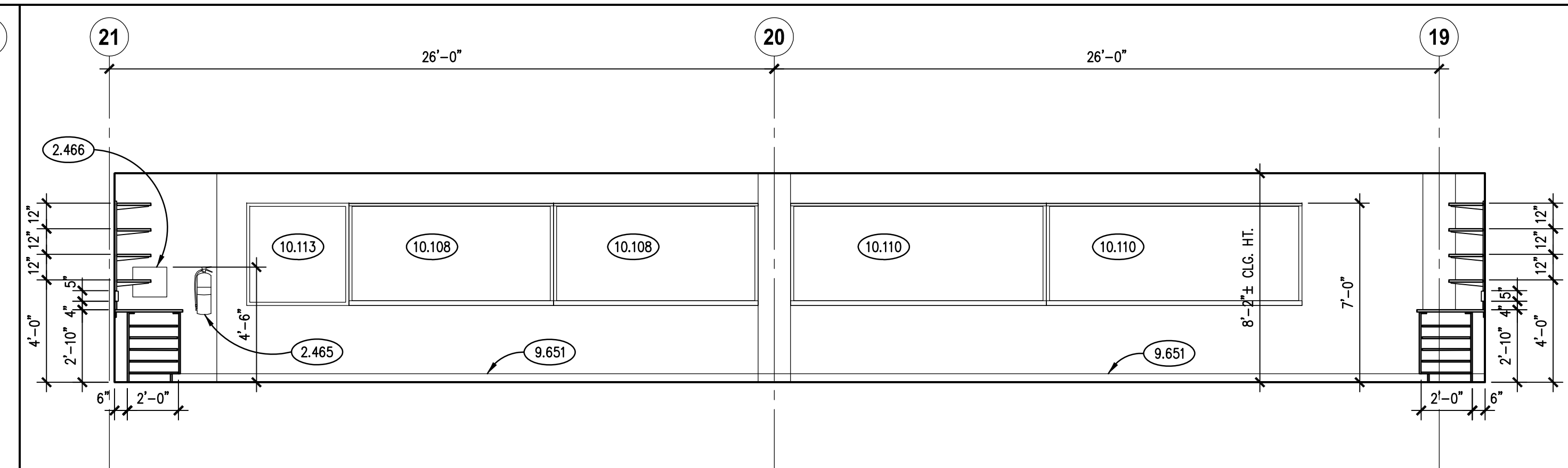
INSTRUCTOR STATION DETAILS 9 SCALE: 1/2" = 1'-0"



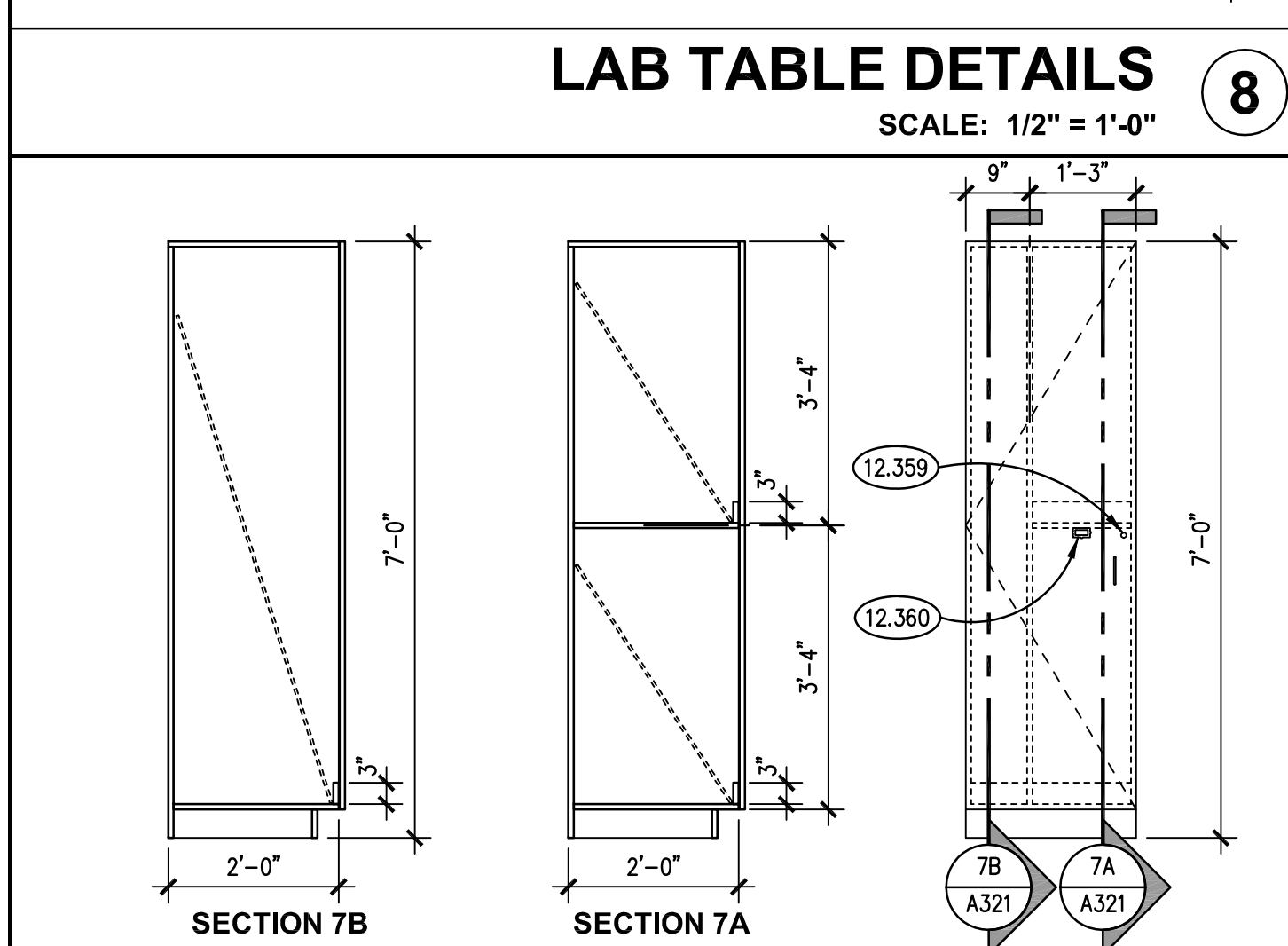
LAB TABLE DETAILS 8 SCALE: 1/2" = 1'-0"



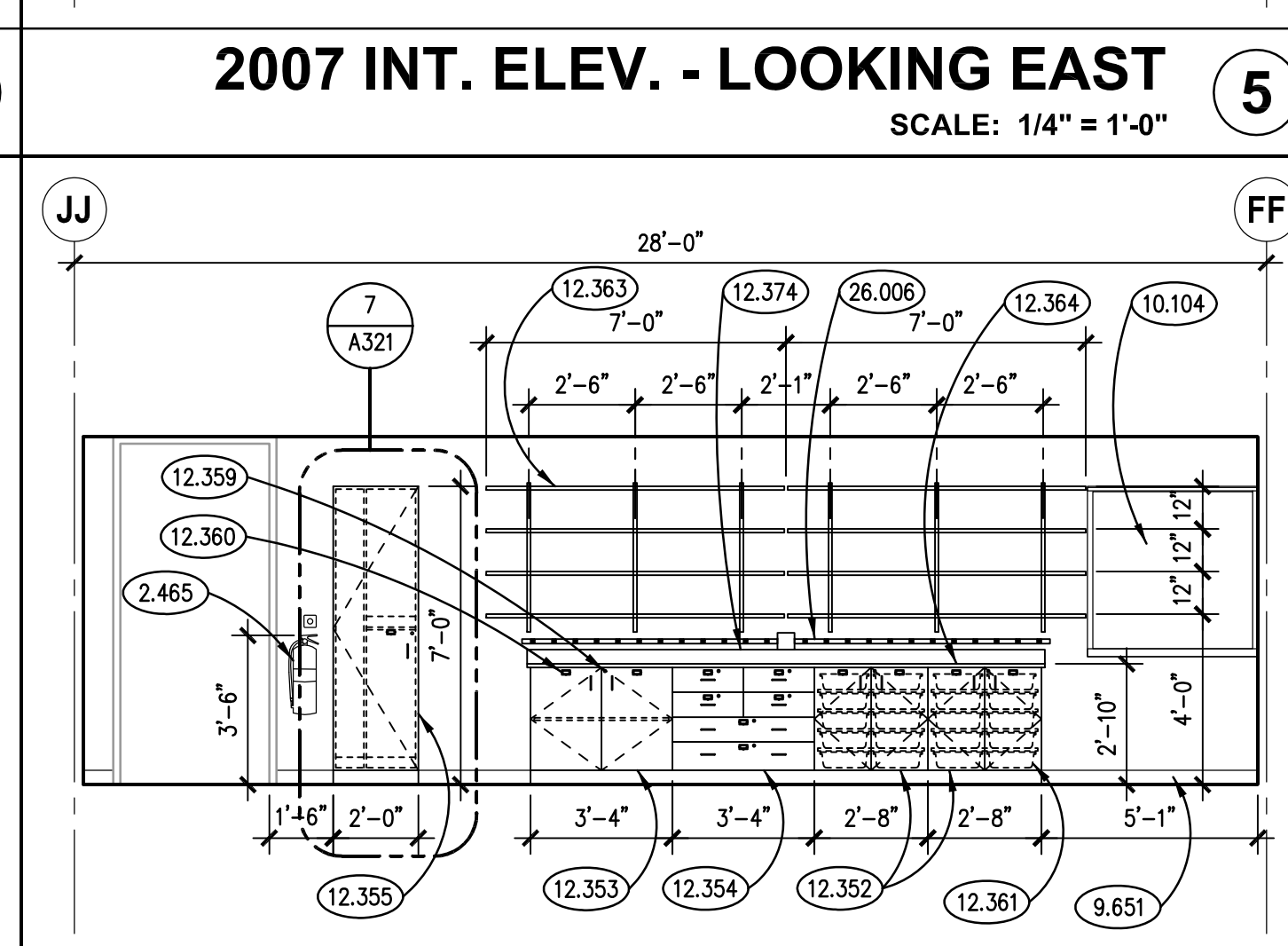
2007 INT. ELEV. - LOOKING EAST 5 SCALE: 1/4" = 1'-0"



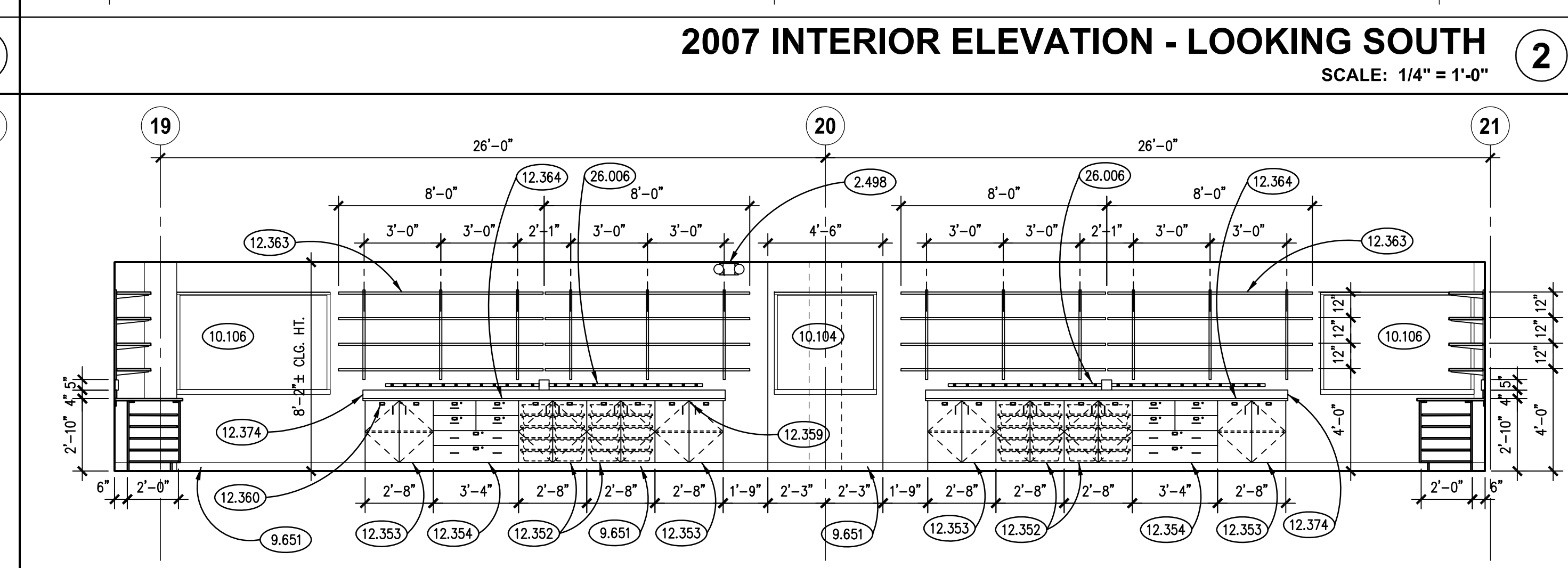
2007 INTERIOR ELEVATION - LOOKING SOUTH 2 SCALE: 1/4" = 1'-0"



ROD STORAGE CABINET DETAILS 7 SCALE: 1/2" = 1'-0"



2007 INT. ELEV. - LOOKING WEST 4 SCALE: 1/4" = 1'-0"



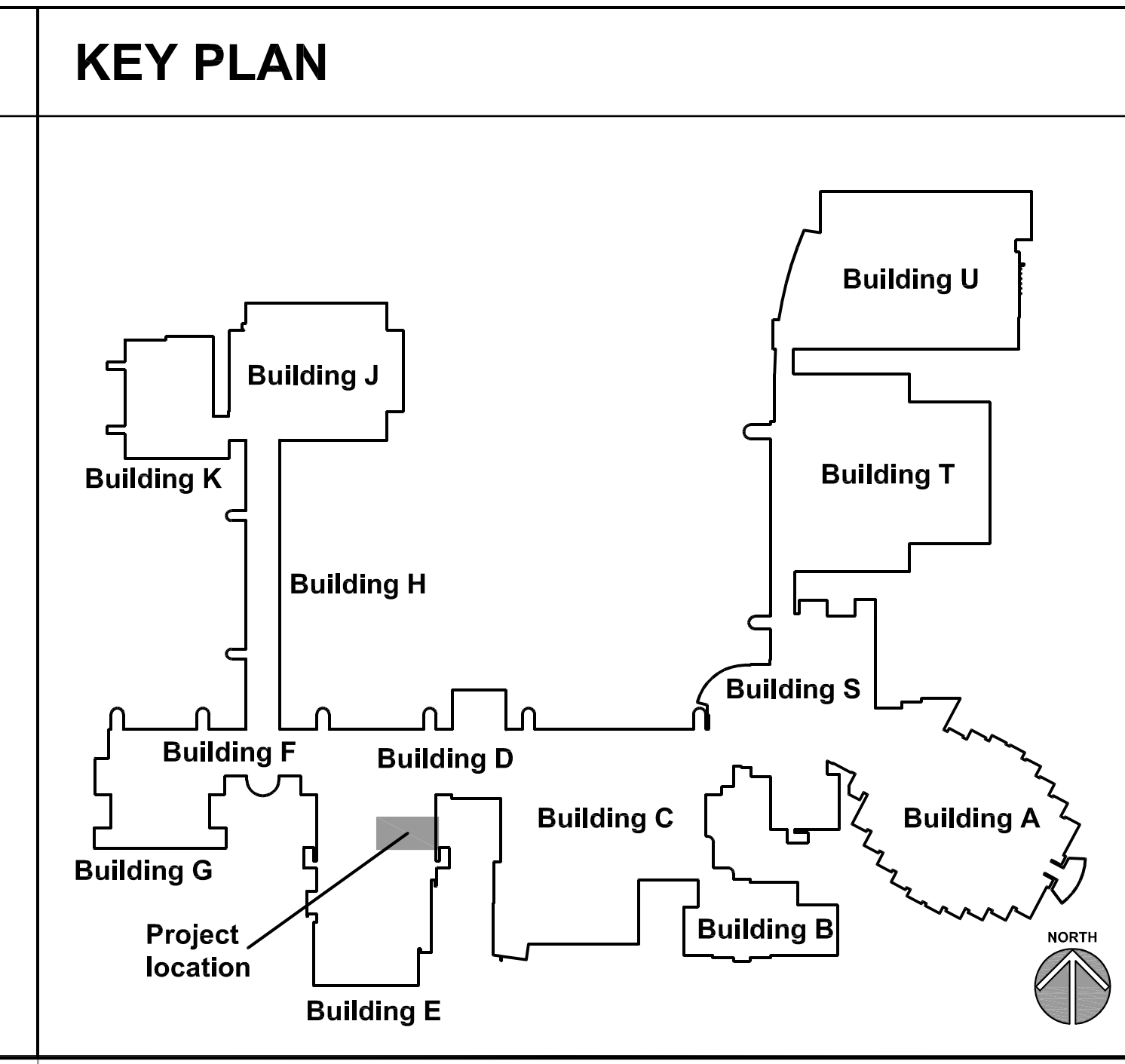
2007 INTERIOR ELEVATION - LOOKING NORTH 1 SCALE: 1/4" = 1'-0"

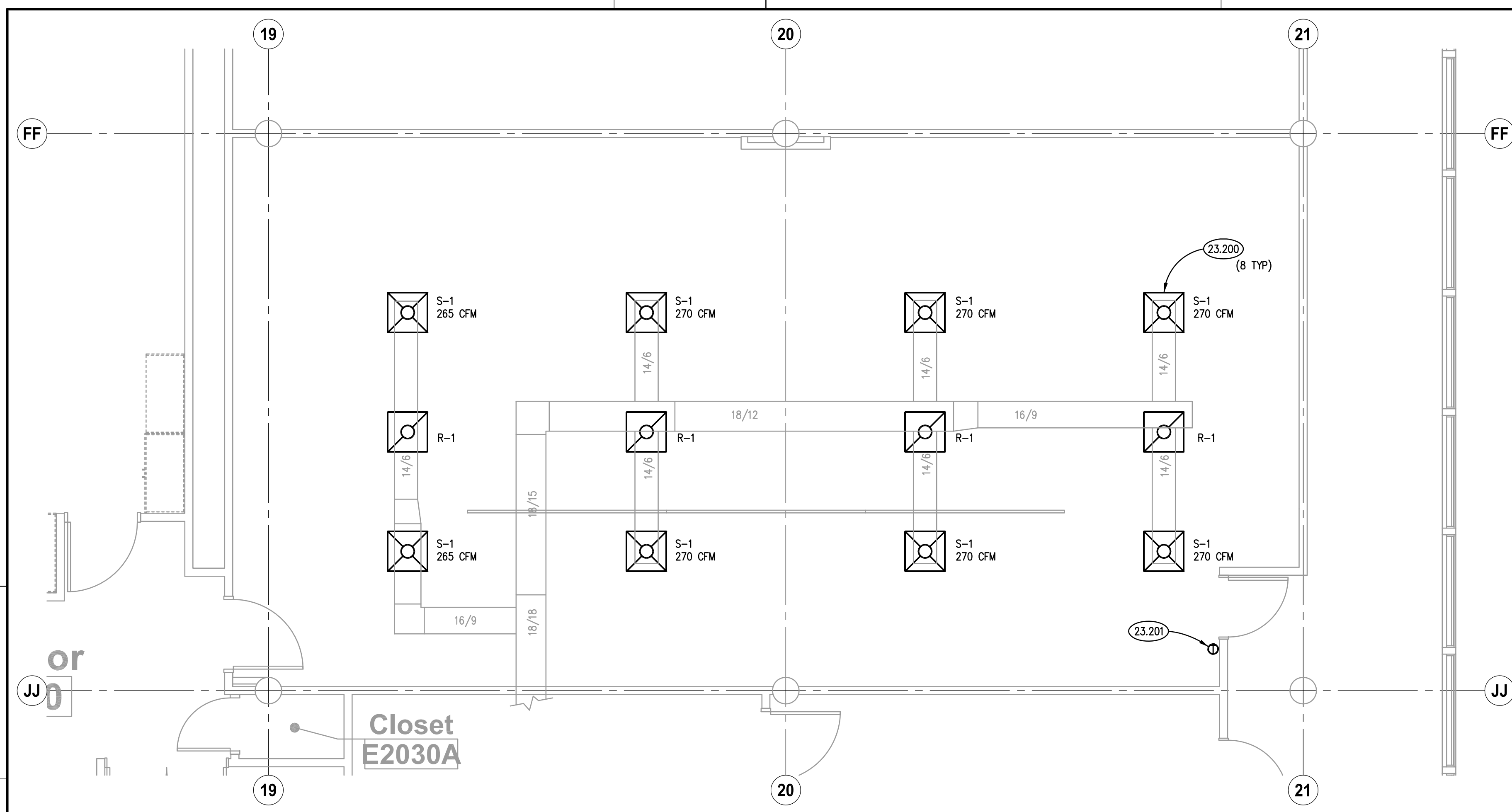
**KEYNOTES**

2.465 SALVAGE EXISTING FIRE EXTINGUISHER AND WALL BRACKET; REINSTALL AS INDICATED.  
 2.466 SALVAGE EXISTING FIRE BLANKET AND CABINET; REINSTALL AS INDICATED.  
 2.483 SALVAGE EXISTING INTERIOR CEILING FINISH: ACOUSTICAL CEILING PANELS AND SUSPENDED GRID COMPONENTS IN THIS AREA; TO PERMIT MODIFICATION OF OVERHEAD PLUMBING PIPING; REINSTALL GRID COMPONENTS AND ACOUSTICAL PANELS AFTER COMPLETION OF PLUMBING WORK; REFER TO PLUMBING DRAWINGS FOR ADDITIONAL INFORMATION.  
 2.498 SALVAGE EXISTING EMERGENCY LIGHT FIXTURE: REMOVE AND REINSTALL IN ORIGINAL LOCATION.  
 9.651 RESILIENT BASE: REFER TO SPECIFICATIONS; PROVIDE WHETHER ALTERNATE BID FOR FLUID-APPLIED FLOORING IS ACCEPTED OR NOT.  
 10.104 VISUAL DISPLAY BOARD: MARKER BOARD W/INTEGRAL TRAY AND MAP RAIL; 4'H X 4'L; MOUNT TOP AT 7'-0" A.F.F. UNLESS NOTED OTHERWISE.  
 10.106 VISUAL DISPLAY BOARD: MARKER BOARD W/INTEGRAL TRAY AND MAP RAIL; 4'H X 6'L; MOUNT TOP AT 7'-0" A.F.F. UNLESS NOTED OTHERWISE.  
 10.108 VISUAL DISPLAY BOARD: MARKER BOARD W/INTEGRAL TRAY AND MAP RAIL; 4'H X 8'L; MOUNT TOP AT 7'-0" A.F.F. UNLESS NOTED OTHERWISE.  
 10.110 VISUAL DISPLAY BOARD: MARKER BOARD W/INTEGRAL TRAY AND MAP RAIL; 4'H X 10'L; MOUNT TOP AT 7'-0" A.F.F. UNLESS NOTED OTHERWISE.  
 10.113 VISUAL DISPLAY BOARD: TACKBOARD; 4'X4'; MOUNT TOP AT 7'-0" A.F.F. UNLESS NOTED OTHERWISE.  
 11.524 AUDIO-VISUAL EQUIPMENT: MONITOR MOUNT, POST SYSTEM WITH SWIVEL ARM; RIGHTANGLE PRODUCTS MODEL #HS1111 WITH STANDARD VESA MONITOR BRACKET; MOUNT TO 2" DIA. GROMMET HOLE IN COUNTERTOP.  
 12.351 WOOD LABORATORY CASEWORK.  
 12.352 WOOD LABORATORY CASEWORK: TOTE TRAY CABINET WITH ADJUSTABLE SHELVES.  
 12.353 WOOD LABORATORY CASEWORK: BASE CABINET WITH ADJUSTABLE SHELF.  
 12.354 WOOD LABORATORY CASEWORK: BASE CABINET DRAWER UNIT.  
 12.355 WOOD LABORATORY CASEWORK: CUSTOM-BUILT APPARATUS ROD STORAGE CABINET.  
 12.356 WOOD LABORATORY CASEWORK: TABLE FRAME, APRONS AND LEGS ON HEAVY-DUTY LOCKING CASTERS.  
 12.357 LABORATORY CASEWORK SERVICE FITTING: NATURAL GAS OUTLET.  
 12.358 LABORATORY CASEWORK SERVICE FITTING: WATER FAUCET; MIXING TYPE.  
 12.359 LABORATORY CASEWORK HARDWARE: DOOR/DRAWER LOCK; TYPICAL, ALL DOORS AND DRAWERS; REFER TO SPECIFICATIONS.  
 12.360 LABORATORY CASEWORK HARDWARE: LABEL HOLDER; TYPICAL, ALL DOORS AND DRAWERS; REFER TO SPECIFICATIONS.  
 12.361 LABORATORY CASEWORK ACCESSORY: TOTE TRAY; TYPICAL; REFER TO SPECIFICATIONS; PROVIDE A TOTAL QUANTITY OF 100 FOR THE PROJECT.  
 12.362 LAB TABLE TOP: EPOXY RESIN.  
 12.363 SHELVES: EPOXY RESIN; 16" DEEP BY LENGTH INDICATED, TYP.; SUPPORTED BY BRACKETS ON 42" HIGH SHELF STANDARDS.  
 12.364 COUNTERTOP: EPOXY RESIN.  
 12.365 COUNTERTOP ACCESSORY: EPOXY RESIN SINK; 16" X 16" X 12"D W/CENTER DRAIN.  
 12.366 COUNTERTOP ACCESSORY: APPARATUS ROD SOCKET; TAPERED TO ACCOMMODATE OWNER'S EXISTING APPARATUS RODS.  
 12.367 COUNTERTOP ACCESSORY: GROMMET; FOR 2" DIA. HOLE.  
 12.374 COUNTERTOP BACK/SIDE SPLASH: 4" HIGH; SAME MATERIAL AS COUNTERTOP.  
 26.005 POWER RECEPTACLE: REFER TO ELECTRICAL DRAWINGS.  
 26.006 ELECTRICAL RACEWAY WITH SIMPLEX RECEPTACLES AT 6" O.C., AS INDICATED; REFER TO ELECTRICAL DRAWINGS.  
 27.100 COMMUNICATIONS RECEPTACLE: REFER TO ELECTRICAL DRAWINGS.

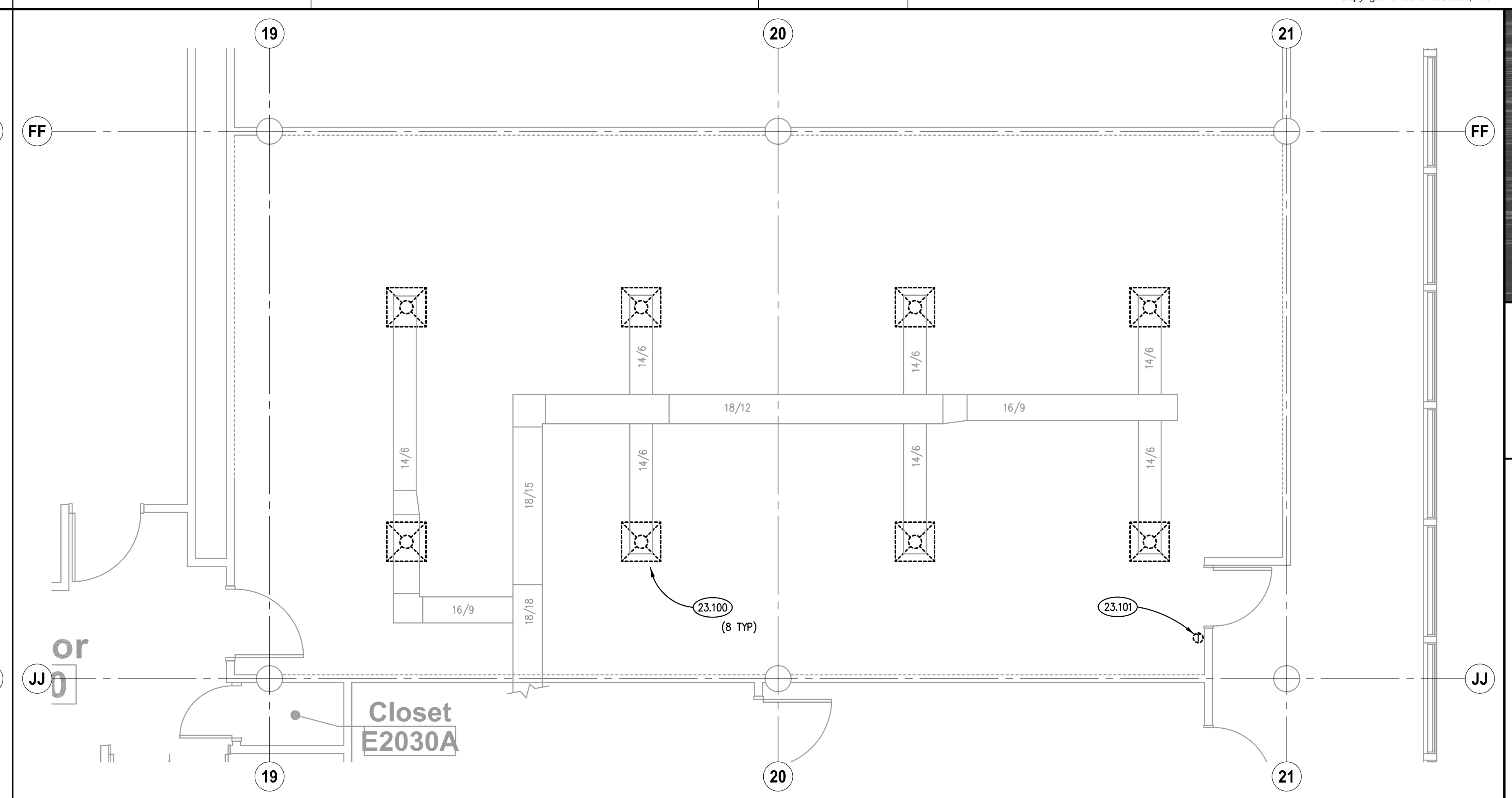
**GENERAL NOTES**

1. REFER TO DRAWING C200 FOR PROJECT GENERAL NOTES.  
 2. IN METAL STUD/GYPSUM BOARD PARTITIONS AND WALLS, PROVIDE 2X FIRE RETARDANT TREATED WOOD BLOCKING FOR WALL-MOUNTED ITEMS REQUIRING MECHANICAL ANCHORAGE.

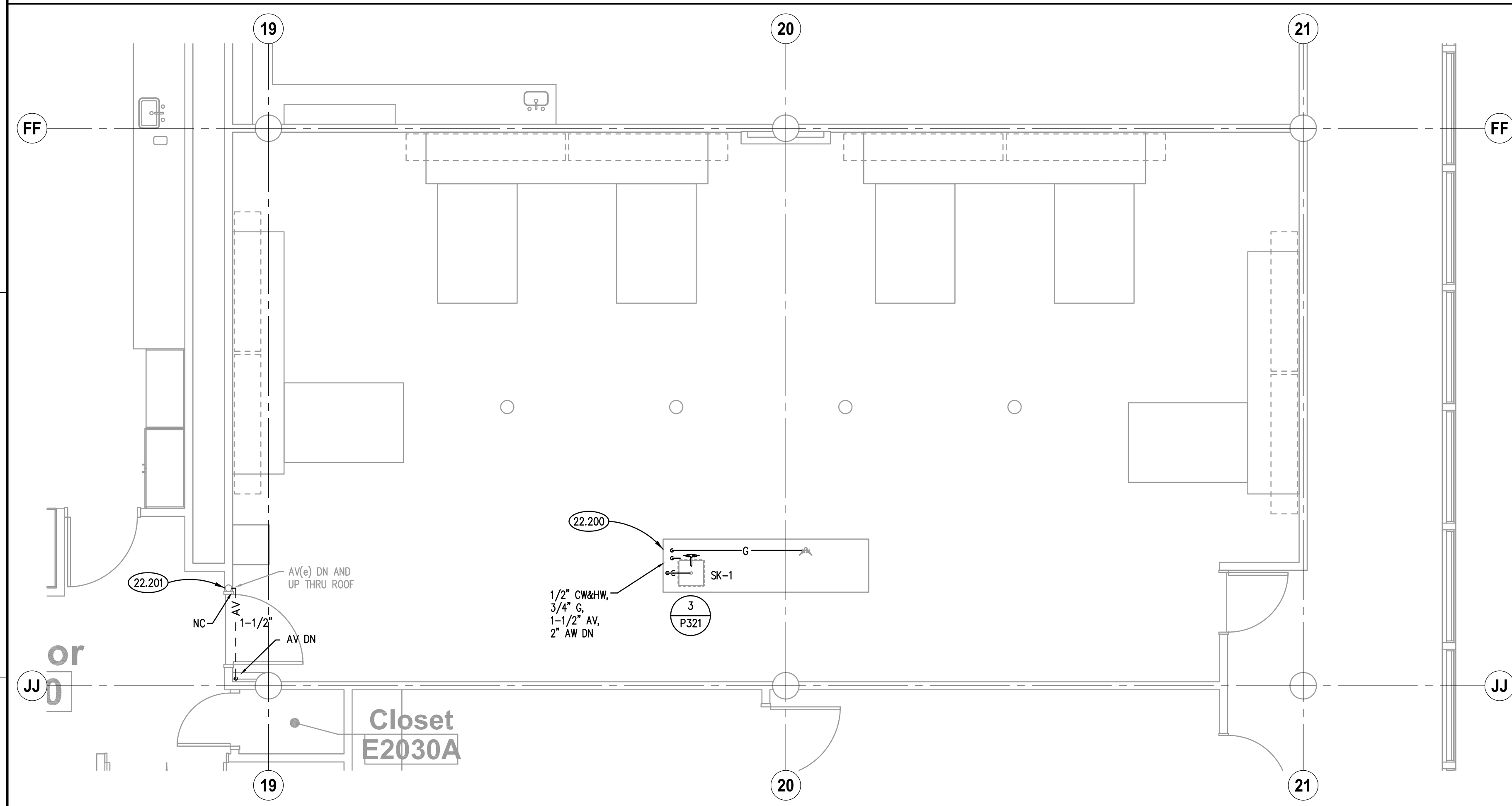




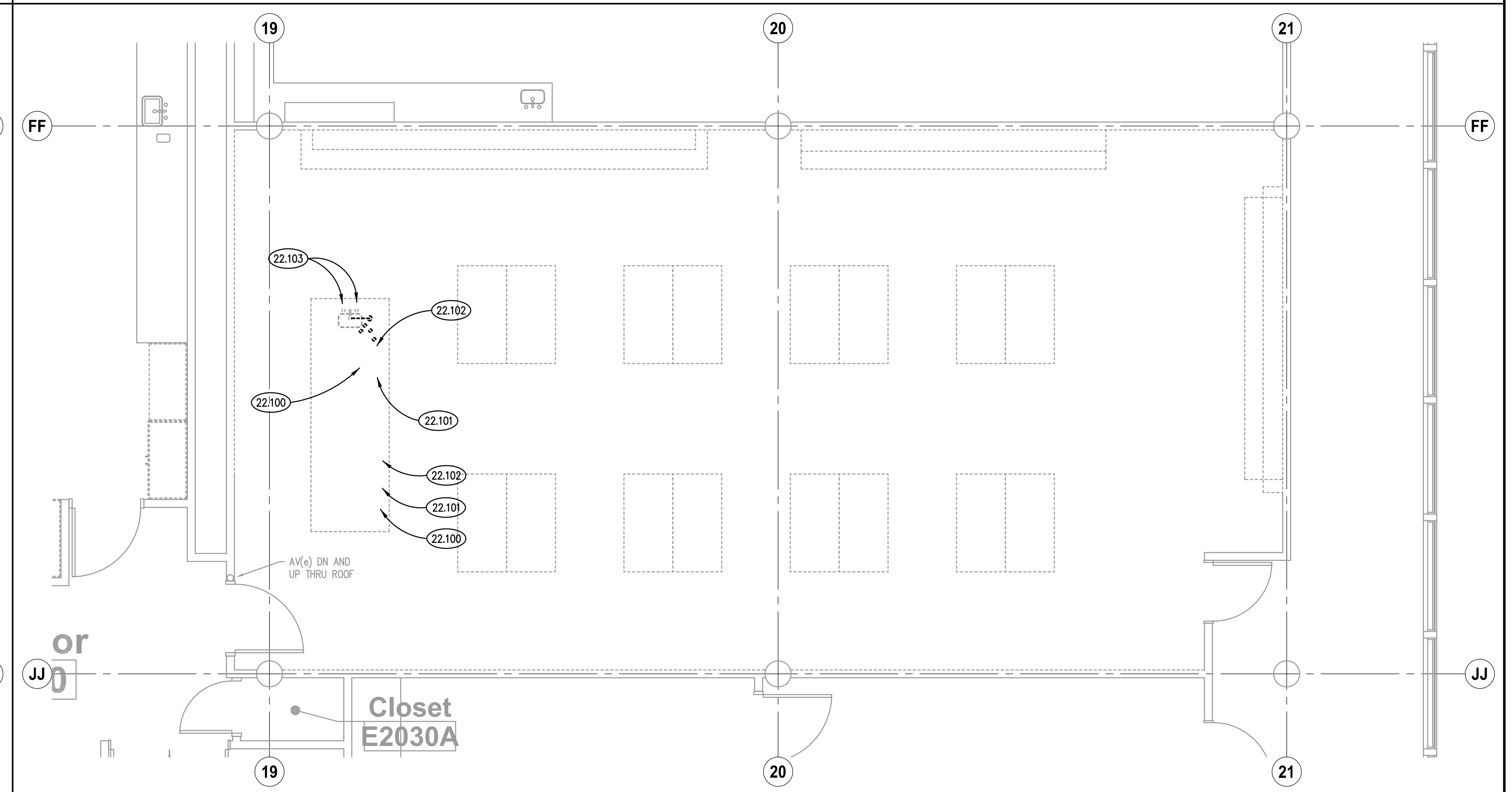
**NEW WORK REFLECTED CEILING PLAN**  
SCALE: 1/4" = 1'-0" **4**



**MECHANICAL DEMOLITION FLOOR PLAN**  
SCALE: 1/4" = 1'-0" **2**



**PLUMBING NEW WORK FLOOR PLAN**  
SCALE: 1/4" = 1'-0" **3**



**PLUMBING DEMOLITION FLOOR PLAN**  
SCALE: 1/4" = 1'-0" **1**

**DIFFUSERS, REGISTERS AND GRILLES SCHEDULE**

MARK	MODEL	SIZE	NECK	DAMPER	MATERIAL	REMARKS
S-1	TMS	24/24	8"ø	QBD	ST	1, 2
R-1	PAR	24/24	22/22	-	ST	1

1. MODEL BASED ON TITUS.

**KEYNOTES**

22.100 REMOVE VACUUM OUTLETS, ALL PIPING IN DESK AND PIPES ON FLOOR BELOW. PIPES ARE ABANDONED STUBS IN CEILING BELOW LAB DESK ON FLOOR BELOW.

22.101 REMOVE AIR OUTLETS, ALL PIPING IN DESK AND PIPES ON FLOOR BELOW. PIPES ARE ABANDONED STUBS IN CEILING BELOW LAB DESK ON FLOOR BELOW.

22.102 REMOVE NATURAL GAS OUTLETS, ALL PIPING IN DESK AND DOWN TO SOLENOID VALVE IN CEILING ON FLOOR BELOW.

22.103 REMOVE LAB FAUCETS, ALL CW/HW PIPING IN DESK AND DOWN TO SHUT-OFF VALVES IN CEILING ON FLOOR BELOW.

23.100 REMOVE DIFFUSER AND PROTECT DUCTWORK FOR NEW DIFFUSER.

23.101 REMOVE, RETAIN AND PROTECT THERMOSTAT FOR REINSTALLATION. COORDINATE WITH GENERAL TRADES CONTRACTOR TO KEEP WIRES ACCESSIBLE.

22.200 PROVIDE COLD WATER, HOT WATER, ACID WASTE/VENT AND GAS PIPING TO NEW TEACHERS STATION AND MAKE FINAL CONNECTIONS TO FIXTURES PROVIDED UNDER DIVISION 12. PROVIDE STOP VALVES FOR WATER PIPES AND SHUT-OFF VALVE FOR GAS UNDER TEACHER STATION.

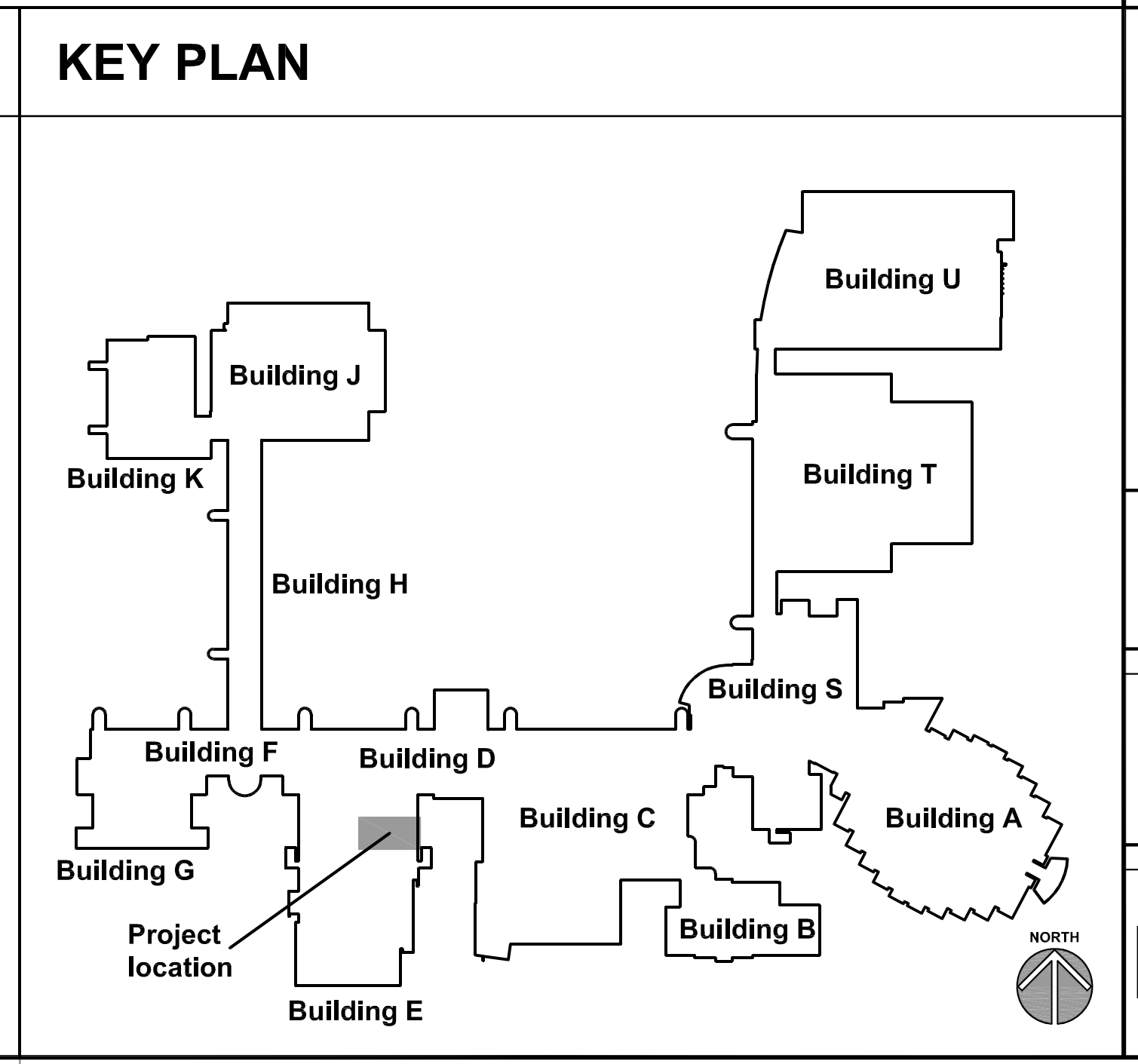
22.201 PROVIDE ACID VENT FROM FLOOR BELOW AND PROVIDE CONNECTION TO EXISTING ACID VENT PIPE. FIELD VERIFY EXACT LOCATION.

23.200 PROVIDE NEW DIFFUSER, ALL REQUIRED MATERIAL AND LABOR TO CONNECT TO EXISTING DUCTWORK.

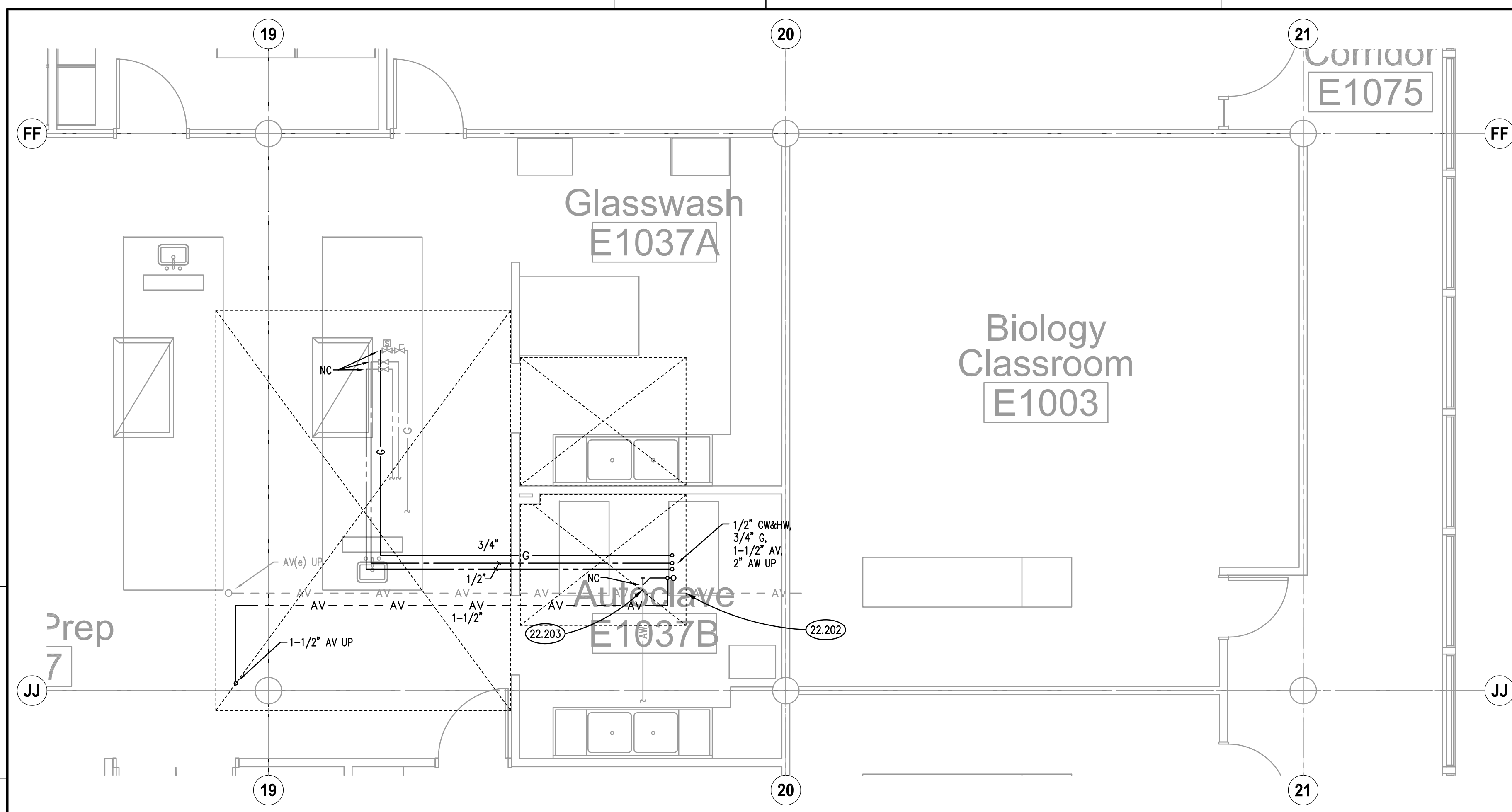
23.201 REINSTALL THERMOSTAT FOR AIR HANDLING UNIT ZONE.

**GENERAL NOTES**

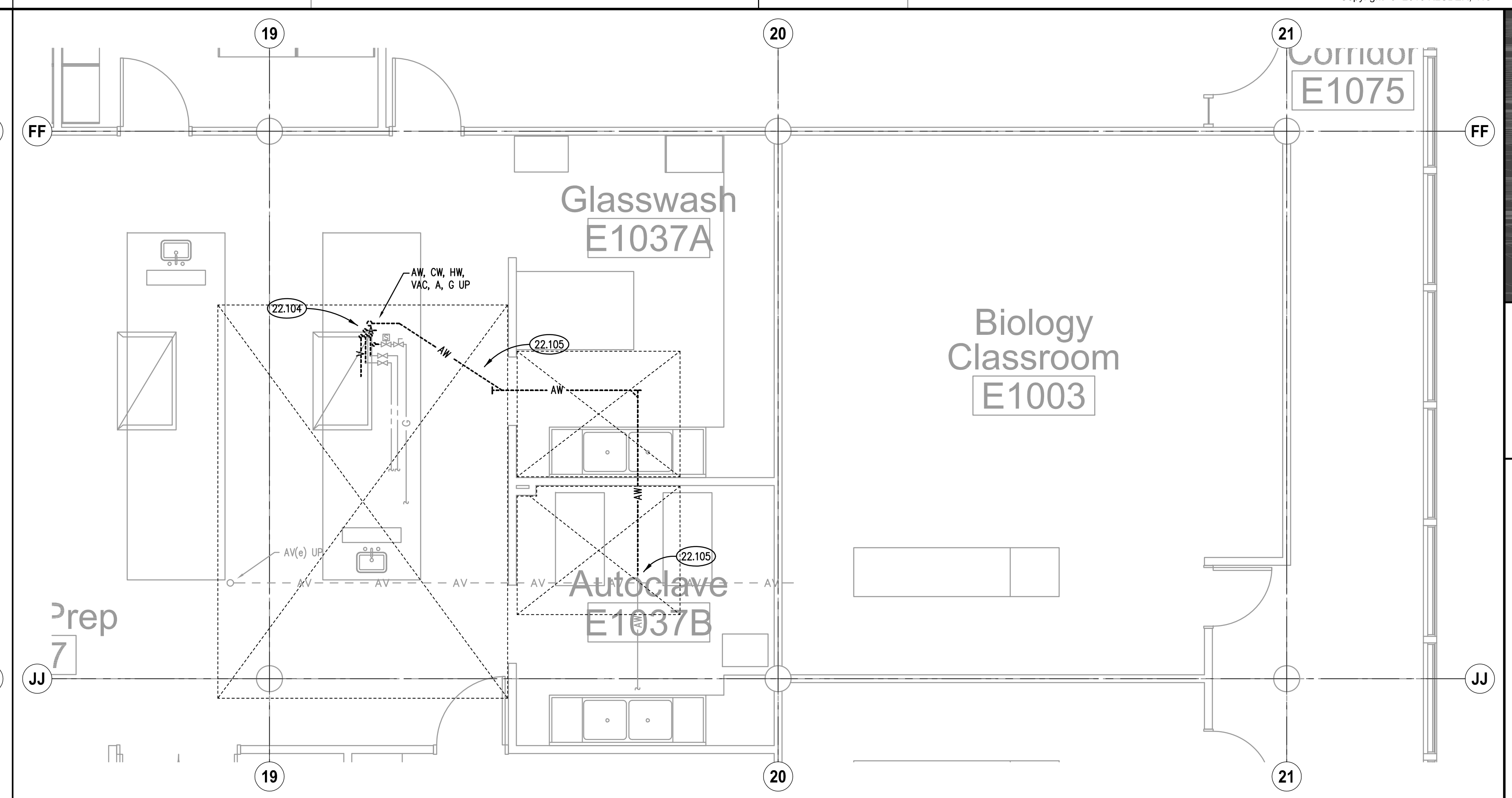
- REFER TO DRAWING G200 FOR PROJECT GENERAL NOTES.
- ALL SANITARY, WASTE AND STORM PIPES UP TO AND INCLUDING 3 INCHES SHALL SLOPE AT 1/4 INCH PER FOOT, 4 INCHES AND LARGER SHALL SLOPE AT 1/8 INCH PER FOOT, UNLESS OTHERWISE NOTED.
- ALL PIPING IS SHOWN DIAGRAMMATICALLY AND DOES NOT SHOW ALL OFFSETS, DROPS AND RISES. THE CONTRACTOR IS RESPONSIBLE TO PROVIDE ALL MATERIAL AND LABOR FOR A COMPLETE AND WORKING SYSTEM.
- OBTAIN AND PAY ALL COSTS FOR PERMITS, LICENSES, CERTIFICATE FILING AND INSPECTIONS BY AUTHORITIES HAVING JURISDICTION.
- EXISTING PIPING INDICATED ON THESE PLANS SHALL BE FIELD VERIFIED FOR EXACT LOCATIONS, QUANTITY AND PIPE SIZES.
- DO NOT CUT THROUGH THE MASONRY BOND BEAMS OR OTHER STRUCTURAL ELEMENT WHEN INSTALLING OPENINGS REQUIRED FOR ALL DUCTWORK, PIPING, CONDUITS OR OTHER WORK. COORDINATE WITH THE STRUCTURAL DRAWINGS AND MASON CONTRACTOR FOR ALL BOND BEAM AND STRUCTURAL ELEMENT LOCATIONS. CONTRACTOR CUTTING THROUGH OR OTHERWISE DAMAGING THESE ELEMENTS WILL BE RESPONSIBLE FOR ALL ASSOCIATED ENGINEERING FEES AND SUBSEQUENT RETRO-FIT/REINFORCING DEEMED NECESSARY TO REINSTATE THE CONTINUITY OF THE DISRUPTED ELEMENTS.
- COORDINATE ROUGH-INS FOR AND INSTALLATION OF PLUMBING FIXTURES WITH ACCESSIBILITY AND MOUNTING INFORMATION CONTAINED ON ARCHITECTURAL DRAWINGS.
- COORDINATE LOCATIONS OF ROUGH-INS FOR SINKS WITH CASEWORK ELEVATIONS CONTAINED ON ARCHITECTURAL DRAWINGS.



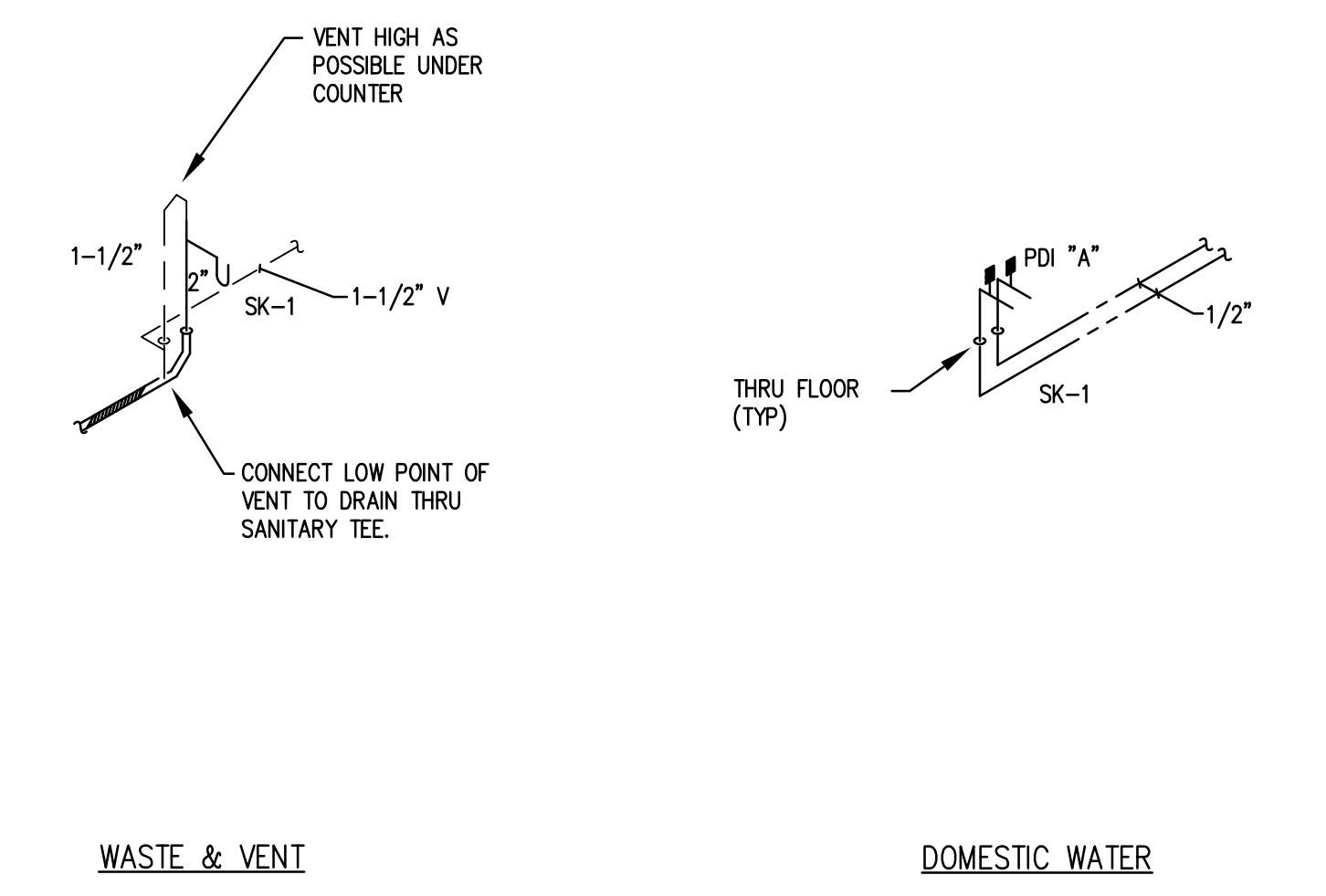
ISSUED	
DATE	
BY	
DESCRIPTION	
JOB NO.	15-292-1007
DRAWN	DOW
CHECKED	DOW
APPROVED	DOW
SHEET TITLE	
PLUMBING AND MECHANICAL FLOOR PLANS	
SHEET NUMBER	
<b>MP320</b>	



**FIRST FLOOR PLUMBING NEW WORK PLAN**  
SCALE: 1/4" = 1'-0" **2**



**FIRST FLOOR PLUMBING DEMOLITION PLAN**  
SCALE: 1/4" = 1'-0" **1**



**RISER DIAGRAM**  
SCALE: NTS **3**

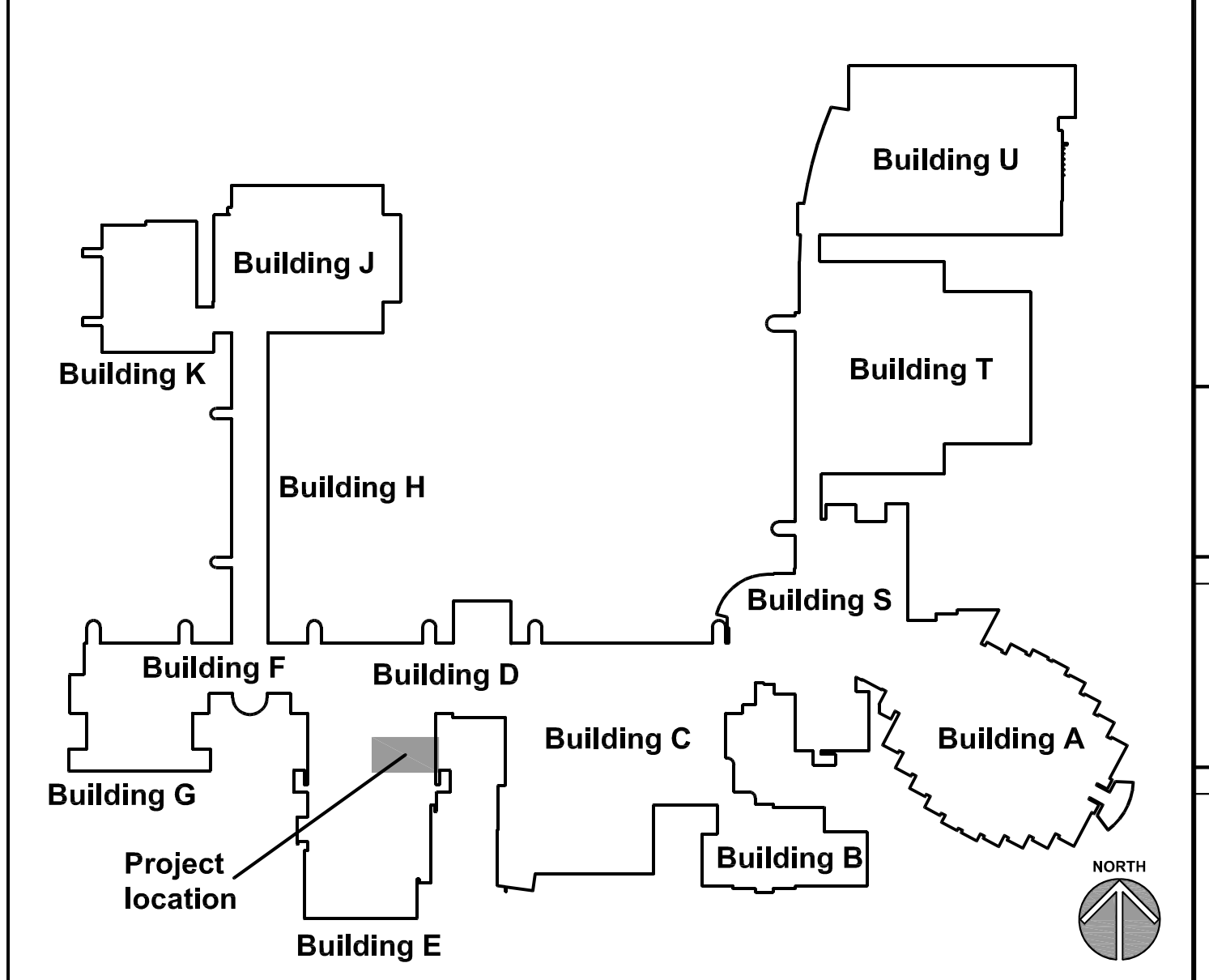
**KEYNOTES**

- 22.104 REMOVE ABANDONED VACUUM AND AIR PIPING. REMOVE COLD WATER AND HOT WATER BACK TO SHUT-OFF VALVES. REMOVE GAS PIPING BACK TO SOLENOID VALVE.
- 22.105 REMOVE ACID WASTE PIPING TO LOCATION IN AREA OF NEW SINK LOCATION ABOVE.
- 22.202 PROVIDE COLD WATER, HOT WATER, ACID WASTE/VENT AND GAS PIPING FOR NEW TEACHER STATION LOCATED ON FLOOR ABOVE.
- 22.203 ALL NON-PLENUM RATED ACID WASTE PIPING THAT BECOMES EXPOSED SHALL BE FIRE INSULATION WRAPPED TO MATCH EXISTING.

**GENERAL NOTES**

1. REFER TO DRAWING G200 FOR PROJECT GENERAL NOTES.
2. ALL SANITARY, WASTE AND STORM PIPES UP TO AND INCLUDING 3 INCHES SHALL SLOPE AT 1/4 INCH PER FOOT, 4 INCHES AND LARGER SHALL SLOPE AT 1/8 INCH PER FOOT, UNLESS OTHERWISE NOTED.
3. ALL PIPING IS SHOWN DIAGRAMMATICALLY AND DOES NOT SHOW ALL OFFSETS, DROPS AND RISES. THE CONTRACTOR IS RESPONSIBLE TO PROVIDE ALL MATERIAL AND LABOR FOR A COMPLETE AND WORKING SYSTEM.
4. OBTAIN AND PAY ALL COSTS FOR PERMITS, LICENSES, CERTIFICATE FILING AND INSPECTIONS BY AUTHORITIES HAVING JURISDICTION.
5. EXISTING PIPING INDICATED ON THESE PLANS SHALL BE FIELD VERIFIED FOR EXACT LOCATIONS, QUANTITY AND PIPE SIZES.
6. DO NOT CUT THROUGH THE MASONRY BOND BEAMS OR OTHER STRUCTURAL ELEMENT WHEN INSTALLING OPENINGS REQUIRED FOR ALL DUCTWORK, PIPING, CONDUITS OR OTHER WORK. COORDINATE WITH THE STRUCTURAL DRAWINGS AND MASON CONTRACTOR FOR ALL BOND BEAM AND STRUCTURAL ELEMENT LOCATIONS. CONTRACTOR CUTTING THROUGH OR OTHERWISE DAMAGING THESE ELEMENTS WILL BE RESPONSIBLE FOR ALL ASSOCIATED ENGINEERING FEES AND SUBSEQUENT RETRO-FIT/REINFORCING DEEMED NECESSARY TO REINSTATE THE CONTINUITY OF THE DISRUPTED ELEMENTS.
7. COORDINATE ROUGH-INS FOR AND INSTALLATION OF PLUMBING FIXTURES WITH ACCESSIBILITY AND MOUNTING INFORMATION CONTAINED ON ARCHITECTURAL DRAWINGS.
8. COORDINATE LOCATIONS OF ROUGH-INS FOR SINKS WITH CASEWORK ELEVATIONS CONTAINED ON ARCHITECTURAL DRAWINGS.

**KEY PLAN**



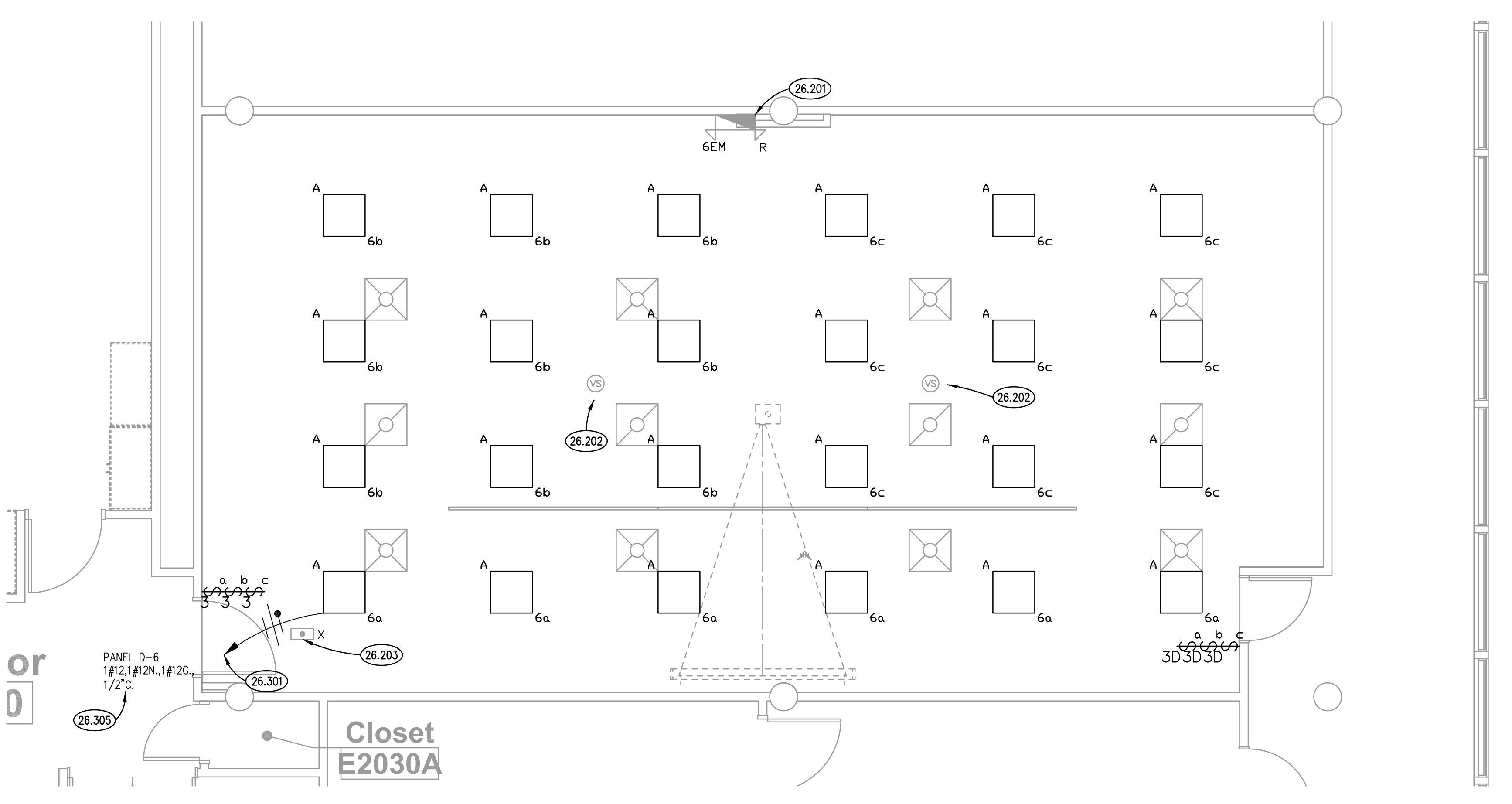
ISSUED	
DATE	
BY	
DESCRIPTION	

JOB NO.	15-292-1007
DRAWN	DDW
CHECKED	DDW
APPROVED	DDW

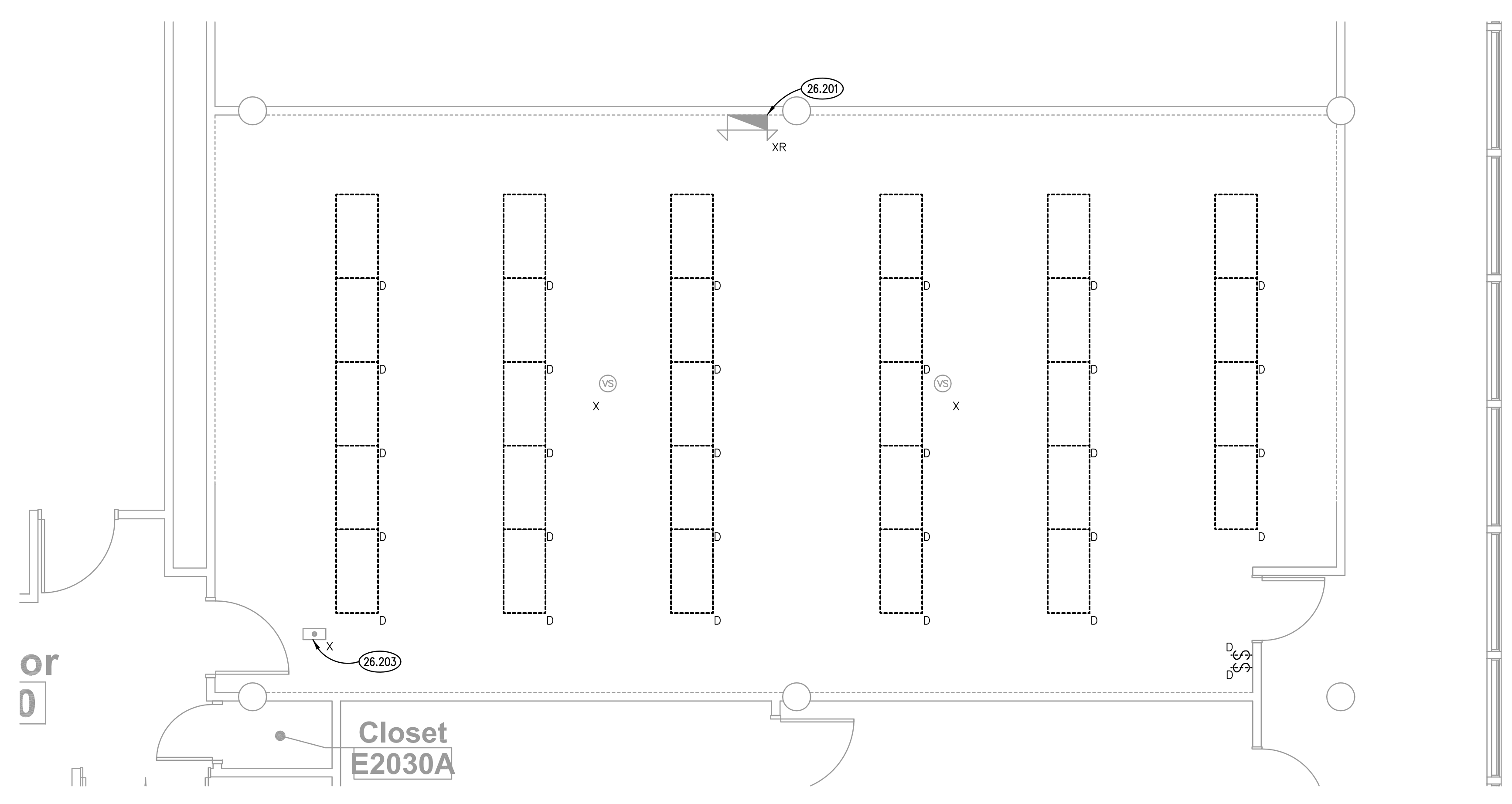
SHEET TITLE  
**FIRST FLOOR PLUMBING PLANS AND DETAILS**

SHEET NUMBER

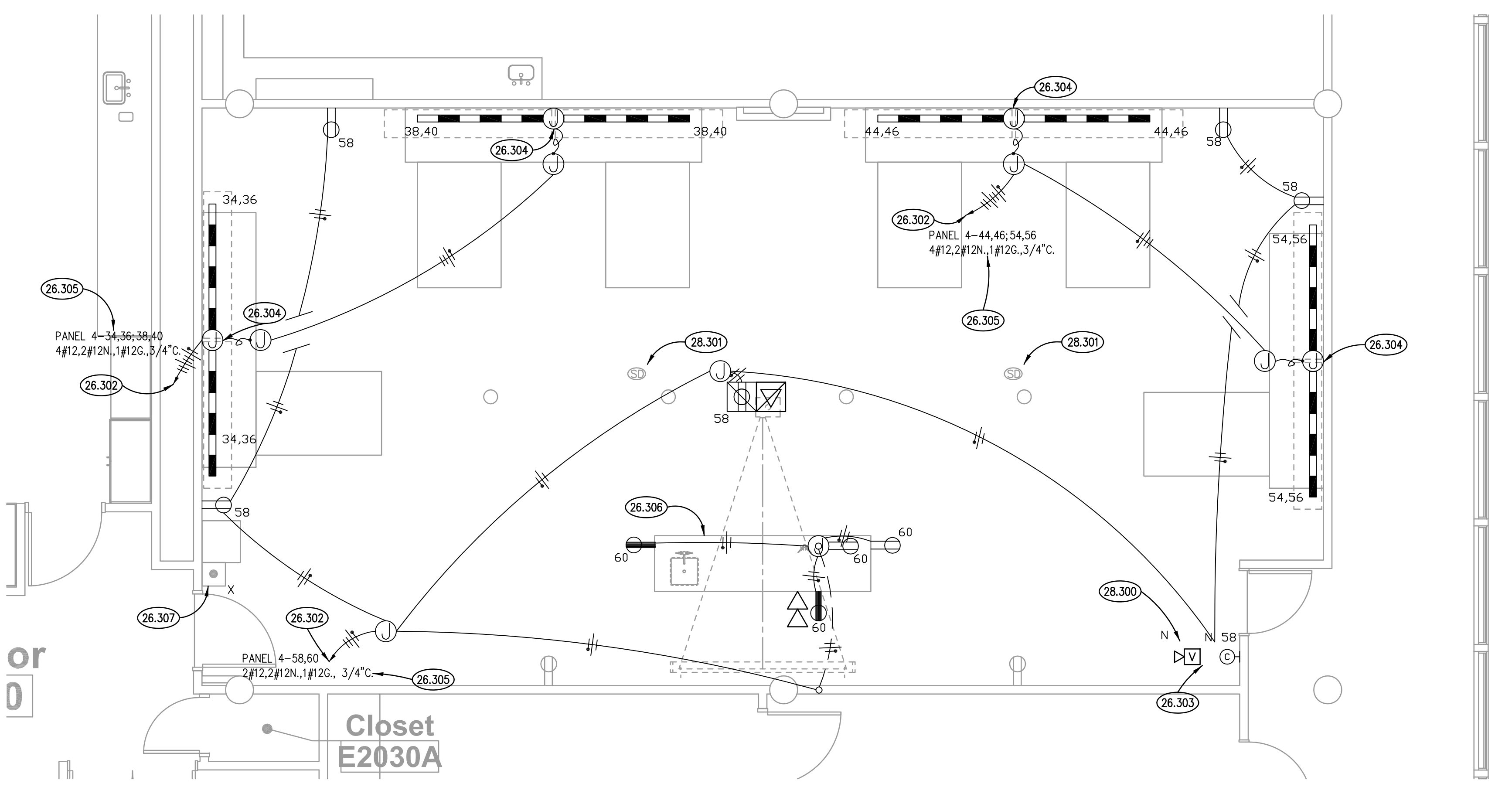
**P321**



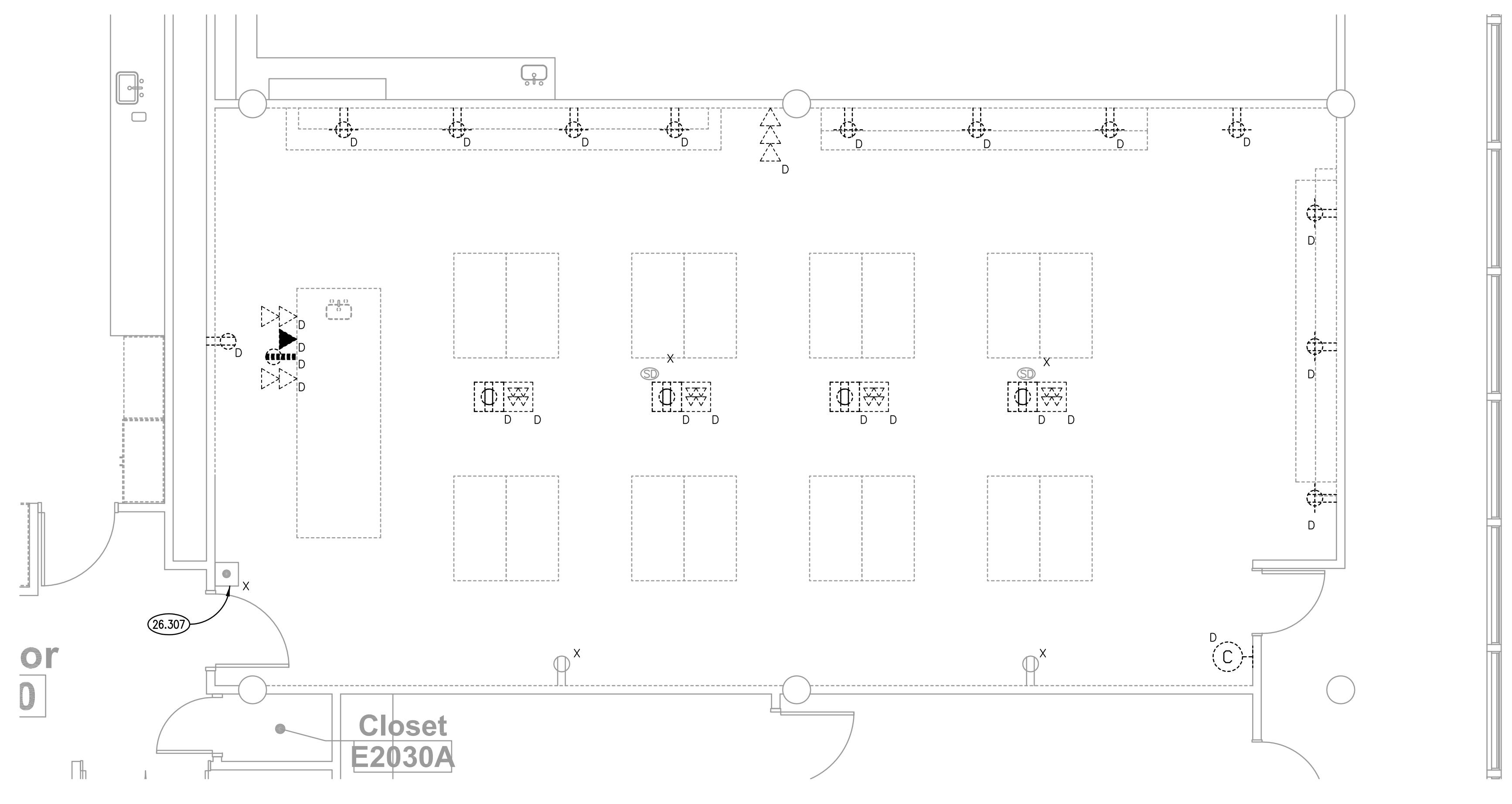
**NEW WORK LIGHTING PLAN** ④  
SCALE: 1/4" = 1'-0"



**DEMOLITION LIGHTING PLAN** ②  
SCALE: 1/4" = 1'-0"



**NEW WORK POWER PLAN** ③  
SCALE: 1/4" = 1'-0"



**DEMOLITION POWER PLAN** ①  
SCALE: 1/4" = 1'-0"

**KEYNOTES**

- 26.201 EXISTING SELF-CONTAINED EMERGENCY LIGHT TO BE REUSED. ELECTRICAL CONTRACTOR TO REMOVE AND RELOCATE EXISTING EMERGENCY LIGHT. EXTEND CIRCUITRY AS NEEDED. SEE ELEVATION DETAIL 1 ON SHEET A321.
- 26.202 EXISTING CEILING MOUNTED VACUANCY SENSORS TO BE REUSED.
- 26.203 EXISTING GAS STATUS INDICATING LANTERN TO REMAIN IN PLACE. PROTECT DURING CONSTRUCTION.
- 26.301 PANEL D IS LOCATED IN NEARBY MECHANICAL ROOM E2033.
- 26.302 PANEL 4 IS LOCATED IN NEARBY MECHANICAL ROOM E2033.
- 26.303 NEW CLOCK TO BE PROVIDED BY OWNER AND INSTALLED BY ELECTRICAL CONTRACTOR. POWER CONNECTION FOR NEW CLOCK TO BE PROVIDED BY ELECTRICAL CONTRACTOR.
- 26.304 MULTIOUTLET ASSEMBLY WITH SINGLE RECEPTACLES SIX (6") INCHES ON CENTER. SIX (6") FOOT LENGTH WITH LINE SIDE TOWARDS CENTER TWO GANG DEVICE BOX ACCESSORY.
- 26.305 REUSE EXISTING SPARE BREAKERS IN PANELBOARD. VERIFY EXISTING CIRCUITS NOTED ON DRAWINGS ARE SPARE BREAKERS PRIOR TO DEMOLITION AND NEW CONSTRUCTION. REUSE BREAKERS FOR BRANCH CIRCUITRY COMPLETELY WITHIN CONSTRUCTION AREA.
- 26.306 ROUTE CONDUIT INSIDE OF CASEWORK. SEE ELEVATION DETAIL 9 ON SHEET A321 FOR INSTRUCTION STATION DETAILS.
- 26.307 EXISTING MASTER GAS SHUTDOWN PUSH BUTTON TO REMAIN IN PLACE. PROTECT PUSH BUTTON DURING CONSTRUCTION.
- 26.300 NEW HORN/STROBE FIRE ALARM NOTIFICATION DEVICE. EXTEND NOTIFICATION APPLIANCE CIRCUIT TO NEW DEVICE.
- 26.301 EXISTING SMOKE DETECTOR TO REMAIN. RELOCATE IN NEW CEILING AS NECESSARY.

**GENERAL NOTES**

- PERFORM SELECTIVE DEMOLITION AS NECESSARY TO ACHIEVE DESIGN INTENT. REMOVE ABANDONED BRANCH CIRCUITRY TO SOURCE OF SUPPLY.
- PATCH ALL WALLS AFFECTED BY DEMOLITION AND REMODELING. CUT AND PATCH WALLS TO CONCEAL CONDUIT IN NEW CONSTRUCTION AND REMODELING. CUT AND PATCH FLOOR AS NEEDED FOR DEMOLITION OF PEDESTAL POWER AND DATA RECEPTACLES.
- INTENT OF DRAWINGS: THESE DRAWINGS ARE INTENDED TO RELAY TO CONTRACTOR A DESIGN INTENT. INCLUDE IN BID ALL LABOR AND MATERIALS NECESSARY FOR A COMPLETE AND OPERATIONAL SYSTEM AS REASONABLY INFERRABLE, AS DETERMINED BY ARCHITECT, TO ACCOMPLISH THE INTENT OF THESE DRAWINGS.
- REFER TO ARCHITECTURAL, MECHANICAL, PLUMBING, FIRE PROTECTION PLANS, SHOP DRAWINGS AND MANUFACTURERS INSTALLATION INSTRUCTIONS FOR ADDITIONAL INFORMATION ON EXACT POWER, WIRING & ROUGH-IN REQUIREMENTS AND LOCATIONS OF DEVICES.
- COMPLETELY REMOVE ALL DISCONNECTED AND ABANDONED LOW VOLTAGE WIRING.
- UNLESS NOTED OTHERWISE, ALL HOMERUNS SHALL CONSIST OF A MAXIMUM OF 3 CIRCUITS (PHASE A, B & C, 3 NEUTRALS & GROUND) IN 3/4". MINIMUM WIRE SIZE SHALL BE #12 AWG. WIRE SIZE FOR RECEPTACLE HOMERUN CIRCUITS SHALL BE 3#12, 3#12N & 1#12G. PROVIDE LARGER SIZE WIRE FOR VOLTAGE DROP WHERE REQUIRED.

**SYMBOLS LIST**

SYMBOL	DESCRIPTION	DEMOLITION
[Square]	2X2 LIGHT FIXTURE.	N NEW DEVICE OR EQUIPMENT.
[Square]	2X4 LIGHT FIXTURE.	D EXISTING ELECTRICAL OUTLET OR EQUIPMENT TO BE DEMOLISHED COMPLETE INCLUDING BRANCH CIRCUITRY TO SOURCE.
[Triangle]	SELF CONTAINED EMERGENCY BATTERY PACK W/ BATTERY BACK-UP. WALL MOUNTED.	X EXISTING ELECTRICAL OUTLET OR EQUIPMENT TO REMAIN. (CIRCUIT # = REROUTE EXISTING CIRCUIT TO NEW CIRCUIT NUMBER)
[Arrow]	BRANCH CIRCUIT WIRING IN CONDUIT HOMERUN TO PANEL. ONE ARROW PER HOMERUN. SLASHES INDICATE NUMBER OF CONDUCTORS.	R EXISTING ELECTRICAL OUTLET OR EQUIPMENT RELOCATED. (NEW LOCATION)
[Dashed Line]	FLEXIBLE CONDUIT CONNECTION.	XR EXISTING ELECTRICAL OUTLET OR EQUIPMENT TO BE REMOVED & RELOCATED(OLD LOCATION).
[Triangle]	COMMUNICATIONS OUTLET @8" AFF. STUB 3/4" E.C. TO ACCESSIBLE CEILING.	
[Square]	COMMUNICATIONS OUTLET. CEILING.	
[Square]	COMMUNICATIONS OUTLET. PEDESTAL FLOOR BOX.	
[Circle]	NEW DEVICE OR EQUIPMENT.	
[Dashed Circle]	EXISTING DEVICE OR EQUIPMENT TO BE REMOVED, RELOCATED, OR DEMOLISHED AS SPECIFIED.	
[Solid Circle]	EXISTING DEVICE, OUTLET OR EQUIPMENT TO REMAIN.	
[Square]	DUPLEX RECEPTACLE. 20A 125V 2P 3W GRD. NEMA5-20R. @18" AFF D=DEDICATED CIRCUIT. 1" = @48" AFF, OR @6" ABOVE COUNTER.	
[Square]	DUPLEX RECEPTACLE. 20A 125V 2P 3W GRD. NEMA5-20R. CEILING.	
[Square]	DUPLEX RECEPTACLE. 20A 125V 2P 3W GRD. NEMA5-20R. PEDESTAL FLOOR BOX.	
[Line]	MULTI-CHANNEL SURFACE RACEWAY @48" AFF OR @6" ABOVE COUNTER. RUN LENGTH AS SHOWN ON PLANS W/RECEP. 6" ON CENTER, U.N.O.	
[Square]	FIRE ALARM HORN/STROBE COMBINATION. @60" AFF NUMBER INDICATES CANDELA LEVEL. (110cd UNLESS NOTED OTHERWISE)	
[Square]	SINGLE POLE TOGGLE SWITCH. 15A OR 20A AS REQUIRED. 120/277V	
[Circle]	JUNCTION BOX.	

**KEY PLAN**

ISSUED  
DATE  
BY

NO.	DATE	BY

JOB NO. 15-292-1007  
DRAWN ATR  
CHECKED MTK  
APPROVED MTK

SHEET TITLE  
**ELECTRICAL POWER AND LIGHTING PLANS**

SHEET NUMBER  
**E320**